

E-SERIES



BE BOLD. DARE TO STAND OUT.

E-Series 21 Cruise • E-Series 23 Cruise EXT • E-Series 23 Flex • E-Series 23 Lounge • E-Series 23 Dual Lounge • E-Series 23 Journey • E-Series 25 Journey EXT

We do things a little differently.

Is Legend Canadian?

Yes. We are a Canadian company. We live and play where you do. We understand boating in the unique Canadian wilderness. It's different here, and that's why each and every model is designed by Canadians and **built for Canadians**. From thicker aluminum to full stand-up tops, we make sure that Mother Nature is no match for your Legend.

Are Legend boats built in Canada?

Yes and No. Our product developers seek out quality manufacturers throughout North America who can produce in the most **cost effective** way. By outsourcing component manufacturing and then performing all final assembly, sales, service, and warranty right here in Canada, we ensure that the end product is fit for the Great Canadian outdoors.

Are the printed catalogue prices MSRP?

No. The printed price is our **hassle-free, lowest price**. We provide it up front, so there's no need for uncomfortable negotiations. To top it off, aside from a small variance in freight, our low prices are the same across Canada. Now you can make an informed, easy, and no-pressure decision in the comfort of your own home.

It seems like everyone's warranty is pretty much the same. Is that the case?

Well, at first glance it appears that most companies are offering some sort of lifetime warranty, and it's easy to assume that all warranties are the same, but the devil is in the details. By details, we're talking about the fine print. Our **WOWranty** combined with our **Lifetime** hull warranties give you the absolute best warranty coverage, bar none. Not only do we cover more stuff for longer, but the best part is that everything is taken care of right here in Canada.

Someone told me Legend boats are underpowered. Is that true?

No. You can actually power your boat with the engine of your choice. Each Legend boat model is designed and packaged with a **Mercury** motor **large enough** to get you and a friend on the water to experience the boating lifestyle with minimal investment. We understand that everyone's boating needs are different, and that the packaged motor may not suit your needs. That's why we make it easy to choose the perfect Mercury outboard to power all of your on-water activities. So, whether you want to troll all day, bring the kids tubing, cruise with your family or pull two water skiers, we'll help you select the engine that's just right.

Why do you only package your boats with Mercury outboards?

We partner exclusively with Mercury because of their proven **quality, value, reliability, service and features**. With the large number of clients we help onto the water each year in Canada, other outboard manufacturers would love us to package with their brand. Mercury appreciates our business so much, they offer us exclusive savings that we simply pass on to you. That's how we package with the oldest, largest, number one outboard engine brand at such an incredible price. On top of a great price, by purchasing a complete custom package you'll enjoy consistent performance and one-location servicing.

We give you the most standard equipment

We've outfitted our boats with more equipment for less. **Things that you would have to pay thousands of dollars extra for with other brands are simply part of our value-packed models**. Many of our Legend packages have standard features like Dura-deck vinyl floors, automatic bilge pumps, and a bunch of other great stuff that is optional in other brands. When it comes to value, we're proud to say that nobody compares. We have more equipment for less than any other brand!

You claim your quality is good but your prices are low. How is that possible?

You get what you pay for right? Well in most cases, yes. But at Legend, we never sacrifice quality in order to reduce cost. Our use of quality brand name products in our packages such as Shoreland'r trailers, Minn Kota trolling motors and Mercury outboards - the largest brands in boating - speak for themselves. **To keep prices low, we build fewer models in higher volumes and package each model with the same popular features**. By purchasing thousands of each component, such as full stand-up tops, fish finders and GPS', we can offer you unbelievably high quality at incredibly low prices. That's how we do it.

Why doesn't everyone put pricing in their catalogues?

That's a great question. We don't know. It could be because it takes a lot more work and effort to include all of the details required when you're sharing a price. Or, perhaps nobody else does it because they have something to hide. But we're only guessing. **All we know is that we're so confident that we offer the absolute best value in Canada that we publish our complete, hassle-free, all-in pricing for all to see**. You can find our prices in our full line brochure, on our extensive website and in all of our advertisements. We even print the pricing of our most popular options so you can "build" your own Legend. Nothing is hidden and it's all in Canadian dollars. We've done the work for you and given you our lowest price right up front.





Let us help you choose the Mercury motor that's right for you!

- 1** Each pontoon boat shows a list of motor choices with pricing and weekly payments.
- 2** We've highlighted the most popular engines on each model to make your motor choice easy.
- 3** Choose the motor that gives you the efficiency you want or the speed desired for the activities you plan to enjoy.

CHOOSE YOUR POWER

Upgrade from a 90 ELPT 4-Stroke to a: Per Week

90 ELPT CT 4-Stroke	+\$599	+\$1
115 ELPT Pro XS CT	+\$3,899	+\$7
150L 4-Stroke	+\$8,399	+\$15

Are You All-In?

CANADA'S **ONLY** FULLY-PRICED CATALOGUE

In a world where we are bombarded with fees, surcharges and extras, wouldn't it be nice if a company would just tell us what it's going to cost up front? Legend Boats is that company. Our prices are All-In!

That's right! No administration fees. No hidden freight fees. No rigging fees. Since 1987, our customers have enjoyed having our package pricing at their fingertips so they could figure out what their perfect Legend boat was going to cost right down to the penny. Now, there's no more figuring out. With one simple up-front price, you choose your motor and any options you want, then simply add the taxes. We would have gotten rid of those too but we thought it may have been frowned upon. It really couldn't get any more simple, open, honest or transparent, and we feel that you will appreciate our All-In Pricing. Using your mobile phone camera simply scan the specific QR code of the model of your choice to access all available pricing.

*We only print one version of our catalogue for all of Canada. Customers outside of Ontario and Quebec will have a small fee for freight. For details, visit us at legendboats.com for your local, ALL-IN, No-Fee Price including current promotions.



The NMMA label on a Legend boat is your proof that it meets, and often exceeds, the industry's strictest quality and safety standards.

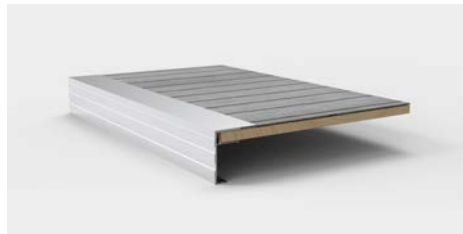


E-Series, Fun Series Construction



Stainless Steel Hardware

Using stainless steel elevator bolts and fasteners instead of pop rivets to attach our decking to the substructure results in a strong, reliable boat for years to come.



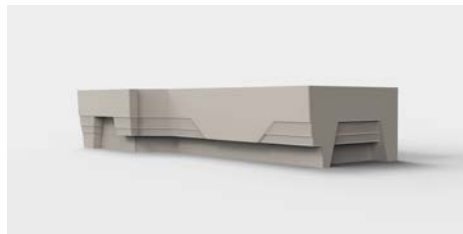
F-style Rub Rail Support

The outside deck edge is covered with this unique F-Style rub rail which clips onto the deck and is fastened securely with stainless bolts. It prevents unnecessary sagging edges and reinforces the entire deck.



Thick Lifetime Decking

A thicker floor means a stronger boat. With 7 layers, each individually treated, we can offer a Lifetime Warranty against rotting. Each seam is sealed with LockOut sealing adhesive and is lined up over a cross member for exceptional dryness.



No-Rot Seat Bases

Made with thick roto-cast material means they can never rot, no matter how wet they get. They even have integrated drainage channels so your gear stays drier as well.

Full-length Heavy-Duty V-keel

Our dual-purpose keels provide great protection against unseen obstacles or sandy beaches, while at the same time adding great control even in wind.

Triple-protected Tube Design

Our pontoons are divided into three separate compartments and sealed, making them air tight even in the event of a puncture. If the air can't get out, water can't get in.

EZ-Drain Tubes

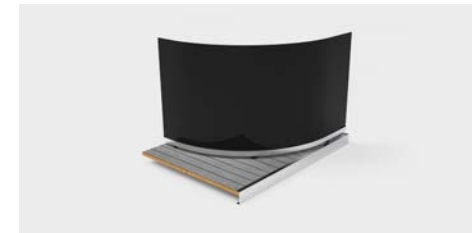
Each section of the tubes are connected to one another by a small channel that allows any condensation to drain completely to the back of the tube and out of our Sure-Lock threaded drain plug.

Wave-slicing Wide Nose Cones

The combination of pointed nose cones with spray deflecting lifting fins means you will have a smooth and dry ride in every Legend pontoon.

Footed Deck Supports

By adding a foot to each deck support, we ensure that downward pressure from the upper deck assembly is spread out over a larger surface area for a safer connection. Your pontoon will last longer.



Raised, Quick Dry, Silent Fencing

3/8" spacers raise the fence off of the deck for desired water run-off and airflow, making deck clean-up a breeze. Anti-vibration foam back panels keep your trip quiet.



CONSOLE

Tilt steering, motor gauges, Bluetooth stereo and GPS fish/depth finder.



FISHING STATION

Huge livewell. 16" ruler. Four rod holders. Two drink holders. This is fishing in style. Available on the Flex exclusively. Shown with ski tow bar, available on Sport models.



REAR-FACING DUAL LOUNGE

The spacious rear facing dual lounge sits 2 guests in comfort. Exclusively available on the Dual Lounge.



INCREDIBLE STORAGE

You'll find storage compartments tucked into every nook and cranny of your E-Series.



POP-UP CHANGE ROOM

All E-Series models come standard with a pop-up change room. Extra large changeroom exclusively available on the 21 Cruise and 23 Cruise EXT.



SWIM LADDER

Stainless steel, telescopic, 4-step oversized boarding ladder.

WE'VE GOT YOU COVERED



Legend ProTech
Canvas Warranty



.090 Gauge
Pontoon Tubes



Lifetime
Tube, Deck and Transom Warranty



6-Year
WOWranty

E-SERIES 21 CRUISE

ALL-IN PRICE
NO EXTRA FEES*

TWO TUBE



\$99*
Per Week

\$47,999*
With Mercury 40 ELPT
CT 4-Stroke

THREE TUBE Sport Pro



\$129*
Per Week

\$61,999*
With Mercury 90 ELPT
4-Stroke



ALSO AVAILABLE IN THESE GREAT
COLOURS:



CHOOSE YOUR POWER



TWO TUBE

Upgrade from a 40 ELPT CT 4-Stroke Per Week

60 ELPT 4-Stroke CT	+\$2,999	+\$6
90 ELPT CT 4-Stroke	+\$6,099	+\$13
115 ELPT 4-Stroke	+\$8,299	+\$17

TRIPLE TUBE

Upgrade from a 90 ELPT 4-Stroke Per Week

90 ELPT CT 4-Stroke	+\$599	+\$1
115 ELPT 4-Stroke	+\$2,799	+\$6
115 ELPT Pro XS CT	+\$3,899	+\$8

SPECIFICATIONS

2 Tube / 3 Tube

Overall Length	21'0"/21'0"	Beam	102"/102"
Maximum Horsepower	125/200	Fuel Capacity	75 L /151 L
Deck Length	19'0"/19'0"	Pontoon Length	19'8"/19'8"
Pontoon Diameter	25"/25"	Maximum Persons	10/11
Maximum Capacity	2100 lbs/2350 lbs	Weight	1900 lbs/2100 lbs

*We only print one version of our catalogue for all of Canada. Customers outside of Ontario and Quebec will have a small fee for freight. For details, visit us at legendboats.com for your local, ALL-IN, No-Fee Price including current promotions.

TAKE A CLOSER LOOK

These details are what make the **Legend Difference**



Extra-large hidden pop-up change room provides privacy to get changed for a dip.



Tilt steering, Bluetooth stereo and GPS fish/depth finder.



Sit up to 4 people around this dinette for drinks, snacks, or a game.



Work on your tan from the aft sun deck.



All Sport models include a built-in removable ski tow bar, great for a day of water sports.



Large telescopic stainless steel boarding ladder makes it easy to climb aboard after a dip in the lake.

WE'VE GOT YOU COVERED



Legend ProTech
Canvas Warranty



.090 Gauge
Pontoon Tubes



Lifetime
Tube, Deck and Transom Warranty



6YR
6-Year
WOWranty

STANDARD FEATURES - ALWAYS INCLUDED

ADDITIONAL FEATURES

- Extra-large bimini top w/ 1 1/4" anodized aluminum frame
- Removable oval table w/ integrated drink holders
- Navigational and bimini-mounted anchor lights
- Integrated changeroom

SAFETY

- Gates w/ posi-lock latches
- Navigational lights
- Bimini-mounted anchor lights

DECKS AND STORAGE

- Sundeck w/ flip-up change room
- 10 drink holders
- Ez-clean rear fun zone for watersports and entertaining

SEATING

- Roto-cast furniture bases w/ drains and storage
- Comfy L-shaped couch
- Deluxe captain's chair with armrests and slider
- 2 front rounded couches for comfy lounging
- 2 chaise lounges w/ integrated storage

CONSOLE

- Deluxe dash w/ chrome-bezeled gauges
- Ez reset circuit breakers
- Horn
- Illuminated switches and gauges
- Molded fibreglass console base w/ cooler storage

CONSTRUCTION

- Large 25" diameter .090 gauge pontoon tubes
- 4 deck-mounted lift and mooring cleats
- Extra-wide 8'6" beam
- 1 1/4" raised aluminum fence rails w/ 3/8" risers
- 3 gates w/ posi-lock latches
- Ez-access rear gate
- Anti vibration foam-backed quiet fencing
- Performance enhancing all-aluminum v-transom
- Pressurized triple-section tube design w/ ez-drain plug
- Plush soft-step teakweave flooring with black accents
- Tough shark-nosed cones w/ spray-deflecting fins

PREFERRED EQUIPMENT PACKAGE

These features are typically optional on most comparable models, but come standard for you to enjoy on the 21 CRUISE.

	VALUE:
✓ PLUSH SOFT-STEP TEAKWEAVE FLOORING W/ BLACK ACCENTS	\$2,999
✓ BLACK TRIM PACKAGE: RAILS, BIMINI FRAME, TRIM, ACCENTS	\$2,199
✓ TWO-TONE ULTRA-SOFT PILLOW-TOP FURNITURE	\$1,999
✓ DELUXE RECLINING CAPTAIN'S CHAIR	\$1,449
✓ OVERSIZED STAINLESS STEEL BOARDING LADDER	\$1,399
✓ BLUETOOTH AM/FM STEREO W/ MP3 PORT AND 4 SPEAKERS	\$999
✓ IN-DASH 5" GPS FISH/DEPTH FINDER	\$799
✓ REMOVABLE TINTED WINDSCREEN	\$699
✓ INTEGRATED FLIP-UP CHANGING ROOM	\$599
✓ TILT STEERING	\$599
✓ INTERIOR COURTESY LIGHT(S)	\$299
✓ DRIVER'S SEAT SLIDER	\$259
✓ DUAL USB POWER OUTLET	\$149

Total Value: \$14,447. **For a Limited Time...You Pay: \$0.**

21 CRUISE SPORT PRO BONUS EQUIPMENT

✓ HYDRAULIC ASSIST STEERING	\$2,999
✓ STAINLESS STEEL SKI TOW BAR	\$1,999

Total Value: \$19,445. **For a Limited Time...You Pay: \$0.**



Add a Full Enclosure



Add a Mooring Cover

Looking for more information? See: Pontoon Boats Accessories | PG 71

Scan the QR code with your mobile phone camera
TO SEE IT UP CLOSE
or visit our website: legendboats.com



E-SERIES 23 CRUISE EXT

ALL-IN PRICE
NO EXTRA FEES*

TWO TUBE



\$106*
Per Week

\$50,999*
With Mercury 40 ELPT
CT 4-Stroke

THREE TUBE Sport Pro



\$135*
Per Week

\$64,999*
With Mercury 90 ELPT
4-Stroke



ALSO AVAILABLE IN THESE GREAT COLOURS:



CHOOSE YOUR POWER



TWO TUBE

Upgrade from a 40 ELPT CT 4-Stroke Per Week

60 ELPT 4-Stroke CT	+\$2,999	+\$6
90 ELPT CT 4-Stroke	+\$6,099	+\$13
115 ELPT 4-Stroke	+\$8,299	+\$17

TRIPLE TUBE

Upgrade from a 90 ELPT 4-Stroke Per Week

90 ELPT CT 4-Stroke	+\$599	+\$1
115 ELPT 4-Stroke	+\$2,799	+\$6
115 ELPT Pro XS CT	+\$3,899	+\$8
150L 4-Stroke	+\$8,399	+\$17

SPECIFICATIONS

2 Tube / 3 Tube

Overall Length	23'0"/23'0"	Beam	102"/102"
Maximum Horsepower	150/250	Fuel Capacity	113 L /227 L
Deck Length	21'0"/21'0"	Pontoon Length	21'8"/21'8"
Pontoon Diameter	25"/25"	Maximum Persons	11/12
Maximum Capacity	2175 lbs/2550 lbs	Weight	2100 lbs/2400 lbs

TAKE A CLOSER LOOK

These details are what make the **Legend Difference**



Extended casting deck with twin 360° fishing seats for you and your best mate.



Sit up to 4 people around this dinette for drinks, snacks, or a game.



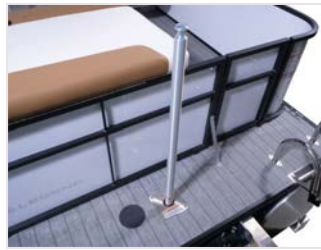
Work on your tan or watch your wake from this ultra comfortable aft sun deck.



Extra-large hidden pop-up change room provides privacy to get changed for a dip in the lake.



Deluxe reclining captain's chair with armrests and seat slider.



Built-in removable ski tow pole for all your water sports enthusiasts. Available on Sport models only.

WE'VE GOT YOU COVERED



Legend ProTech
Canvas Warranty



.090 Gauge
Pontoon Tubes



Lifetime
Tube, Deck and Transom Warranty



6YR
6-Year
WOWranty

STANDARD FEATURES - ALWAYS INCLUDED

ADDITIONAL FEATURES

- Extra-large bimini top w/ 1 1/4" anodized aluminum frame
- Interior courtesy light
- Removable oval table w/ integrated drink holders
- Navigational and bimini-mounted anchor lights
- Integrated changer room
- Built-in fuel tank - 113 L

SAFETY

- Gates w/ posi-lock latches
- Navigational lights
- Bimini-mounted anchor lights

DECKS AND STORAGE

- Sundeck w/ flip-up change room
- Drink holders
- Ez-clean rear fun zone for watersports and entertaining

SEATING

- Deluxe captain's chair with armrests and slider
- Comfy L-shaped couch
- 2 front rounded couches for comfy lounging
- Chaise lounges w/ integrated storage
- 2 removable high-back swivel chairs

CONSOLE

- Deluxe dash w/ chrome-bezeled gauges
- Ez reset circuit breakers
- Horn
- Illuminated switches and gauges
- Molded fibreglass console base w/ cooler storage

CONSTRUCTION

- Large 25" diameter .090 gauge pontoon tubes
- 4 deck-mounted lift and mooring cleats
- Extra-wide 8'6" beam
- Individually treated 3/4" 7-ply marine-grade plywood
- 1 1/4" raised aluminum fence rails w/ 3/8" risers
- 3 gates w/ posi-lock latches
- Ez-access rear gate
- Anti vibration foam-backed quiet fencing
- Pressurized triple-section tube design w/ ez-drain plug
- Plush soft-step teakweave flooring with black accents
- Tough shark-nosed cones w/ spray-deflecting fins

PREFERRED EQUIPMENT PACKAGE

These features are typically optional on most comparable models, but come standard for you to enjoy on the 23 CRUISE EXT.

	VALUE:
✓ PLUSH SOFT-STEP TEAKWEAVE FLOORING W/ BLACK ACCENTS	\$2,999
✓ BLACK TRIM PACKAGE: RAILS, BIMINI FRAME, TRIM, ACCENTS	\$2,199
✓ TWO-TONE ULTRA-SOFT PILLOW-TOP FURNITURE	\$1,999
✓ DELUXE RECLINING CAPTAIN'S CHAIR	\$1,449
✓ OVERSIZED STAINLESS STEEL BOARDING LADDER	\$1,399
✓ BLUETOOTH AM/FM STEREO W/ MP3 PORT AND 4 SPEAKERS	\$999
✓ IN-DASH 5" GPS FISH/DEPTH FINDER	\$799
✓ REMOVABLE TINTED WINDSCREEN	\$699
✓ INTEGRATED FLIP-UP CHANGING ROOM	\$599
✓ TILT STEERING	\$599
✓ INTERIOR COURTESY LIGHT(S)	\$299
✓ DRIVER'S SEAT SLIDER	\$259
✓ DUAL USB POWER OUTLET	\$149

Total Value: \$14,447. **For a Limited Time...You Pay: \$0.**

23 CRUISE EXT SPORT PRO BONUS EQUIPMENT

✓ HYDRAULIC ASSIST STEERING	\$2,999
✓ STAINLESS STEEL SKI TOW BAR	\$1,999

Total Value: \$19,445. **For a Limited Time...You Pay: \$0.**



Add a Sunblockr Shade Extender



Add a Kuuma Portable Marine BBQ

Looking for more information? See: Pontoon Boats Accessories | PG 71

Scan the QR code with your mobile phone camera
TO SEE IT UP CLOSE
or visit our website: legendboats.com



E-SERIES 23 FLEX

ALL-IN PRICE
NO EXTRA FEES*

TWO TUBE



\$116*
Per Week

\$55,999*
With Mercury 40 ELPT
CT 4-Stroke

THREE TUBE Sport Pro



\$145*
Per Week

\$69,999*
With Mercury 90 ELPT
4-Stroke



ALSO AVAILABLE IN THESE GREAT
COLOURS:



CHOOSE YOUR POWER



TWO TUBE

Upgrade from a 40 ELPT CT 4-Stroke Per Week

60 ELPT 4-Stroke CT	+\$2,999	+\$6
90 ELPT CT 4-Stroke	+\$6,099	+\$13
115 ELPT Pro XS CT	+\$9,399	+\$19

TRIPLE TUBE

Upgrade from a 90 ELPT 4-Stroke Per Week

90 ELPT CT 4-Stroke	+\$599	+\$1
115 ELPT Pro XS CT	+\$3,899	+\$8
150L 4-Stroke	+\$8,399	+\$17

SPECIFICATIONS

2 Tube / 3 Tube

Overall Length	23'0"/23'0"	Beam	102"/102"
Maximum Horsepower	150/250	Fuel Capacity	113 L /227 L
Deck Length	21'0"/21'0"	Pontoon Length	21'8"/21'8"
Pontoon Diameter	25"/25"	Maximum Persons	11/12
Maximum Capacity	2175 lbs/2550 lbs	Weight	2100 lbs/2400 lbs

TAKE A CLOSER LOOK

These details are what make the **Legend Difference**



Fishing station with livewell, rod holders, cup holders, and a ruler to measure your catch.



Sport models include a built-in ski tow bar that is perfect for an afternoon of water skiing.



Oversized Aluminum Boarding Ladder



Find enormous amounts of hidden storage space under every couch.



Two removable 360° swivel seats at your fishing station.



Tilt steering, Bluetooth stereo, and touchscreen GPS fish/depth finder.

WE'VE GOT YOU COVERED



Legend ProTech
Canvas Warranty



.090 Gauge
Pontoon Tubes



Lifetime
Tube, Deck and Transom Warranty



6YR
6-Year
WOWranty

STANDARD FEATURES - ALWAYS INCLUDED

ADDITIONAL FEATURES

- Extra-large bimini top w/ 1 1/4" anodized aluminum frame
- Interior courtesy light
- Removable oval table w/ integrated drink holders
- Navigational and bimini-mounted anchor lights
- Integrated changerroom
- Built-in fuel tank - 113 L

SAFETY

- Gates w/ posi-lock latches
- Navigational lights
- Bimini-mounted anchor lights

DECKS AND STORAGE

- Drink holders
- Ez-clean rear fun zone for watersports and entertaining
- Rear fishing area

SEATING

- Roto-cast furniture bases w/ drains and storage
- Deluxe captain's chair with armrests and slider
- 2 front rounded couches for comfy lounging
- Chaise lounges w/ integrated storage
- 2 removable high-back swivel chairs

LIVWELL(S)

- Aerated livewell
- High capacity aerator pump
- Threaded sure-lock stand pipe w/ overflow protection

CONSOLE

- Deluxe dash w/ chrome-bezeled gauges
- Ez-reset circuit breakers
- Horn
- Illuminated switches and gauges
- Molded fibreglass console base w/ cooler storage

CONSTRUCTION

- Large 25" diameter .090 gauge pontoon tubes
- 4 deck-mounted lift and mooring cleats
- Extra-wide 8'6" beam
- Through-bolted floor fasteners and double-sealed seams
- 1 1/4" raised aluminum fence rails w/ 3/8" risers
- 4 gates w/ posi-lock latches
- Ez-access rear gate
- Anti-vibration foam-backed quiet fencing
- Pressurized triple-section tube design w/ ez-drain plug
- Plush soft-step teakweave flooring with black accents
- Tough shark-nosed cones w/ spray-deflecting fins

PREFERRED EQUIPMENT PACKAGE

These features are typically optional on most comparable models, but come standard for you to enjoy on the 23 FLEX.

	VALUE:
✓ PLUSH SOFT-STEP TEAKWEAVE FLOORING W/ BLACK ACCENTS	\$2,999
✓ BLACK TRIM PACKAGE: RAILS, BIMINI FRAME, TRIM, ACCENTS	\$2,199
✓ TWO-TONE ULTRA-SOFT PILLOW-TOP FURNITURE	\$1,999
✓ DELUXE RECLINING CAPTAIN'S CHAIR	\$1,449
✓ OVERSIZED STAINLESS STEEL BOARDING LADDER	\$1,399
✓ BLUETOOTH AM/FM STEREO W/ MP3 PORT AND 4 SPEAKERS	\$999
✓ IN-DASH 5" GPS FISH/DEPTH FINDER	\$799
✓ REMOVABLE TINTED WINDSCREEN	\$699
✓ INTEGRATED FLIP-UP CHANGING ROOM	\$599
✓ TILT STEERING	\$599
✓ INTERIOR COURTESY LIGHT(S)	\$299
✓ DRIVER'S SEAT SLIDER	\$259
✓ DUAL USB POWER OUTLET	\$149

Total Value: \$14,447. **For a Limited Time...You Pay: \$0.**

23 FLEX SPORT PRO BONUS EQUIPMENT

✓ HYDRAULIC ASSIST STEERING	\$2,999
✓ STAINLESS STEEL SKI TOW BAR	\$1,999

Total Value: \$19,445. **For a Limited Time...You Pay: \$0.**



Add Premium Legend Life Jackets



Add Pontoon Oversized Black Fenders

Looking for more information? See: Pontoon Boats Accessories | PG 71

Scan the QR code with your mobile phone camera
TO SEE IT UP CLOSE
or visit our website: legendboats.com



E-SERIES 23 LOUNGE

ALL-IN PRICE
NO EXTRA FEES*

TWO TUBE



\$116*
Per Week

\$55,999*
With Mercury 40 ELPT
CT 4-Stroke

THREE TUBE Sport Pro



\$145*
Per Week

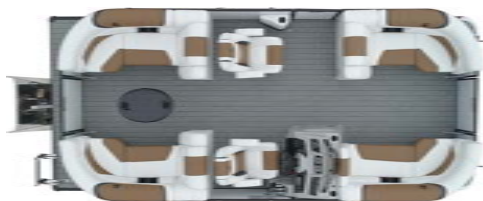
\$69,999*
With Mercury 90 ELPT
4-Stroke

THREE TUBE Black Edition



\$153*
Per Week

\$73,999*
With Mercury 90 ELPT
4-Stroke



ALSO AVAILABLE IN THESE GREAT COLOURS:



CHOOSE YOUR POWER



TWO TUBE

Upgrade from a 40 ELPT CT 4-Stroke Per Week

60 ELPT 4-Stroke CT	+\$2,999	+\$6
90 ELPT CT 4-Stroke	+\$6,099	+\$13
115 ELPT 4-Stroke	+\$8,299	+\$17

TRIPLE TUBE

Upgrade from a 90 ELPT 4-Stroke Per Week

90 ELPT CT 4-Stroke	+\$599	+\$1
115 ELPT Pro XS CT	+\$3,899	+\$8
150L 4-Stroke	+\$8,399	+\$17

SPECIFICATIONS

2 Tube / 3 Tube

Overall Length	23'0"/23'0"	Beam	102"/102"
Maximum Horsepower	150/250	Fuel Capacity	113 L /227 L
Deck Length	21'0"/21'0"	Pontoon Length	21'8"/21'8"
Pontoon Diameter	25"/25"	Maximum Persons	11/12
Maximum Capacity	2175 lbs/2550 lbs	Weight	2100 lbs/2400 lbs

TAKE A CLOSER LOOK

These details are what make the **Legend Difference**



Extended forward loungers seat up to 5 people in comfort.



Tilt steering, Bluetooth stereo and GPS fish/depth finder.



Hidden pop-up change room provides privacy to get changed for a dip in the lake.



Matching captain and co-captain 360° swivel seats.



Stainless steel ski tow bar, available on Sport models only.



Dining area seats up to 6 people

WE'VE GOT YOU COVERED



Legend ProTech
Canvas Warranty



.090 Gauge
Pontoon Tubes



Lifetime
Tube, Deck and Transom Warranty



6YR
6-Year
WOWranty

STANDARD FEATURES - ALWAYS INCLUDED

ADDITIONAL FEATURES

- Extra-large bimini top w/ 1 1/4" anodized aluminum frame
- Interior courtesy light
- Removable oval table w/ integrated drink holders
- Navigational and bimini-mounted anchor lights
- Integrated changeroom
- Built-in fuel tank - 113 L

DECKS AND STORAGE

- Drink holders
- Ez-clean rear fun zone for watersports and entertaining

SEATING

- Roto-cast furniture bases w/ drains and storage
- Deluxe captain's chair with armrests and slider
- Deluxe passenger's chair with armrests and slider
- 2 front rounded couches for comfy lounging
- Chaise lounges w/ integrated storage
- 360° surround seating w/ 4 chaise lounge couches

CONSOLE

- Deluxe dash w/ chrome-bezeled gauges
- Ez-reset circuit breakers
- Horn
- Illuminated switches and gauges
- Molded fibreglass console base w/ cooler storage

CONSTRUCTION

- Large 25" diameter .090 gauge pontoon tubes
- Full-length protective extruded keels on tubes
- 4 deck-mounted lift and mooring cleats
- Extra-wide 8'6" beam
- Individually treated 3/4" 7-ply marine-grade plywood
- Through-bolted floor fasteners and double-sealed seams
- 1 1/4" raised aluminum fence rails w/ 3/8" risers
- 3 gates w/ posi-lock latches
- Ez-access rear gate
- Anti-vibration foam-backed quiet fencing
- Performance-enhancing all-aluminum v-transom
- Pressurized triple-section tube design w/ ez-drain plug
- Plush soft-step teakweave flooring with black accents
- Tough shark-nosed cones w/ spray-deflecting fins

PREFERRED EQUIPMENT PACKAGE

These features are typically optional on most comparable models, but come standard for you to enjoy on the 23 LOUNGE.

	VALUE:
✓ PLUSH SOFT-STEP TEAKWEAVE FLOORING W/ BLACK ACCENTS	\$2,999
✓ BLACK TRIM PACKAGE: RAILS, BIMINI FRAME, TRIM, ACCENTS	\$2,199
✓ TWO-TONE ULTRA-SOFT PILLOW-TOP FURNITURE	\$1,999
✓ DELUXE RECLINING CAPTAIN'S CHAIR	\$1,449
✓ BLUETOOTH AM/FM STEREO W/ MP3 PORT AND 4 SPEAKERS	\$999
✓ OVERSIZED ALUMINUM BOARDING LADDER	\$799
✓ IN-DASH 5" GPS FISH/DEPTH FINDER	\$799
✓ REMOVABLE TINTED WINDSCREEN	\$699
✓ INTEGRATED FLIP-UP CHANGING ROOM	\$599
✓ TILT STEERING	\$599
✓ INTERIOR COURTESY LIGHT(S)	\$299
✓ DRIVER'S SEAT SLIDER	\$259
✓ DUAL USB POWER OUTLET	\$149

Total Value: \$13,847. **For a Limited Time...You Pay: \$0.**

23 LOUNGE SPORT PRO BONUS EQUIPMENT

✓ HYDRAULIC ASSIST STEERING	\$2,999
✓ STAINLESS STEEL SKI TOW BAR	\$1,999

Total Value: \$18,845. **For a Limited Time...You Pay: \$0.**



Add a Sunblockr Shade Extender



Add a Kuuma Portable Marine BBQ

Looking for more information? See: Pontoon Boats Accessories | PG 71

Scan the QR code with your mobile phone camera

TO SEE IT UP CLOSE
or visit our website: legendboats.com



E-SERIES 23 DUAL LOUNGE

ALL-IN PRICE
NO EXTRA FEES*

TWO TUBE



\$118*
Per Week

\$56,999*
With Mercury 40 ELPT
CT 4-Stroke

THREE TUBE Sport Pro



\$147*
Per Week

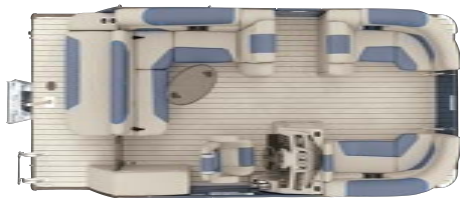
\$70,999*
With Mercury 90 ELPT
4-Stroke

THREE TUBE Black Edition



\$155*
Per Week

\$74,999*
With Mercury 90 ELPT
4-Stroke



ALSO AVAILABLE IN THESE GREAT COLOURS:



CHOOSE YOUR POWER



TWO TUBE

Upgrade from a 40 ELPT CT 4-Stroke Per Week

60 ELPT 4-Stroke CT	+\$2,999	+\$6
90 ELPT CT 4-Stroke	+\$6,099	+\$13
115 ELPT 4-Stroke	+\$8,299	+\$17

TRIPLE TUBE

Upgrade from a 90 ELPT 4-Stroke Per Week

90 ELPT CT 4-Stroke	+\$599	+\$1
115 ELPT 4-Stroke	+\$2,799	+\$6
115 ELPT Pro XS CT	+\$3,899	+\$8
150L 4-Stroke	+\$8,399	+\$17

SPECIFICATIONS

2 Tube / 3 Tube

Overall Length	23'0"/23'0"	Beam	102"/102"
Maximum Horsepower	150/250	Fuel Capacity	113 L /227 L
Deck Length	21'0"/21'0"	Pontoon Length	21'8"/21'8"
Pontoon Diameter	25"/25"	Maximum Persons	11/12
Maximum Capacity	2175 lbs/2550 lbs	Weight	2100 lbs/2400 lbs

TAKE A CLOSER LOOK

These details are what make the **Legend Difference**



Convertible rear-facing lounge transforms a humble bench into a reclining sun bed for two.



Move the backrest into its original position to create a dining space for up to 4 people.



Hidden pop-up change room provides privacy to get changed for a dip in the lake.



Extended twin lounging sofas seat up to 6 people in comfort in the bow.



Starboard bench conceals massive additional storage space.



Sport models include a built-in ski tow bar, perfect for a day of water sports.

WE'VE GOT YOU COVERED



Legend ProTech
Canvas Warranty



.090 Gauge
Pontoon Tubes



Lifetime
Tube, Deck and Transom Warranty



6YR
WOWranty

STANDARD FEATURES - ALWAYS INCLUDED

ADDITIONAL FEATURES

- Extra-large bimini top w/ 1 1/4" anodized aluminum frame
- Interior courtesy light
- Removable oval table w/ integrated drink holders
- Navigational and bimini-mounted anchor lights
- Integrated changeroom
- Built-in fuel tank - 113 L

SAFETY

- Gates w/ posi-lock latches
- Navigational lights
- Bimini-mounted anchor lights

DECKS AND STORAGE

- Drink holders
- Ez-clean rear fun zone for watersports and entertaining

SEATING

- Deluxe captain's chair with armrests and slider
- Comfy L-shaped couch
- 2 front rounded couches for comfy lounging
- Chaise lounges w/ integrated storage
- 360° surround seating w/ 4 chaise lounge couches
- Comfy multi-use large rear recliner

CONSOLE

- Deluxe dash w/ chrome-bezeled gauges
- Ez-reset circuit breakers
- Horn
- Illuminated switches and gauges
- Molded fibreglass console base w/ cooler storage

CONSTRUCTION

- Large 25" diameter .090 gauge pontoon tubes
- 4 deck-mounted lift and mooring cleats
- Extra-wide 8'6" beam
- Through-bolted floor fastening and double-sealed seams
- 1 1/4" raised aluminum fence rails w/ 3/8" risers
- 3 gates w/ posi-lock latches
- Ez-access rear gate
- Anti-vibration foam-backed quiet fencing
- Pressurized triple-section tube design w/ ez-drain plug
- Plush soft-step teakweave flooring with black accents
- Tough shark-nosed cones w/ spray-deflecting fins

PREFERRED EQUIPMENT PACKAGE

These features are typically optional on most comparable models, but come standard for you to enjoy on the 23 DUAL LOUNGE.

	VALUE:
✓ PLUSH SOFT-STEP TEAKWEAVE FLOORING W/ BLACK ACCENTS	\$2,999
✓ BLACK TRIM PACKAGE: RAILS, BIMINI FRAME, TRIM, ACCENTS	\$2,199
✓ TWO-TONE ULTRA-SOFT PILLOW-TOP FURNITURE	\$1,999
✓ DELUXE RECLINING CAPTAIN'S CHAIR	\$1,449
✓ BLUETOOTH AM/FM STEREO W/ MP3 PORT AND 4 SPEAKERS	\$999
✓ OVERSIZED ALUMINUM BOARDING LADDER	\$799
✓ IN-DASH 5" GPS FISH/DEPTH FINDER	\$799
✓ REMOVABLE TINTED WINDSCREEN	\$699
✓ INTEGRATED FLIP-UP CHANGING ROOM	\$599
✓ TILT STEERING	\$599
✓ INTERIOR COURTESY LIGHT(S)	\$299
✓ DRIVER'S SEAT SLIDER	\$259
✓ DUAL USB POWER OUTLET	\$149

Total Value: \$13,847. **For a Limited Time...You Pay: \$0.**

23 DUAL LOUNGE SPORT PRO BONUS EQUIPMENT

✓ HYDRAULIC ASSIST STEERING	\$2,999
✓ STAINLESS STEEL SKI TOW BAR	\$1,999

Total Value: \$18,845. **For a Limited Time...You Pay: \$0.**



Add a Rokk Waterproof Wireless Charger



Add a Deckhand Electric Anchor Kit

Looking for more information? See: Pontoon Boats Accessories | PG 71

Scan the QR code with your mobile phone camera
TO SEE IT UP CLOSE
or visit our website: legendboats.com



E-SERIES 23 JOURNEY

ALL-IN PRICE
NO EXTRA FEES*

TWO TUBE



\$122*
Per Week

\$58,999*
With Mercury 40 ELPT
CT 4-Stroke

THREE TUBE Sport Pro



\$151*
Per Week

\$72,999*
With Mercury 90 ELPT
4-Stroke

THREE TUBE Black Edition



\$160*
Per Week

\$76,999*
With Mercury 90 ELPT
4-Stroke



CHOOSE YOUR POWER



TWO TUBE

Upgrade from a 40 ELPT CT 4-Stroke Per Week

60 ELPT 4-Stroke CT	+\$2,999	+\$6
90 ELPT CT 4-Stroke	+\$6,099	+\$13
115 ELPT Pro XS CT	+\$9,399	+\$19

TRIPLE TUBE

Upgrade from a 90 ELPT 4-Stroke Per Week

90 ELPT CT 4-Stroke	+\$599	+\$1
115 ELPT Pro XS CT	+\$3,899	+\$8
150 L Pro XS 4-Stroke with Stainless Steel Prop.	+\$11,849	+\$25

SPECIFICATIONS

2 Tube / 3 Tube

Overall Length	23'0"/23'0"	Beam	102"/102"
Maximum Horsepower	150/250	Fuel Capacity	113 L / 227 L
Deck Length	21'0"/21'0"	Pontoon Length	21'8"/21'8"
Pontoon Diameter	25"/25"	Maximum Persons	11/12
Maximum Capacity	2175 lbs/2550 lbs	Weight	2100 lbs/2400 lbs

TAKE A CLOSER LOOK

These details are what make the **Legend Difference**



Hang out with your friends on the L-shaped couch, or...



...ring the dinner bell and feast around this dining table for four, or...



...lay back after an adventure-filled day and take a nap. There's no wrong way to Journey.



Potable water sink and food preparation station.



Hidden pop-up change room.



Convenient book and magazine holder, accessible in any seating configuration.

WE'VE GOT YOU COVERED



Legend ProTech
Canvas Warranty



.090 Gauge
Pontoon Tubes



Lifetime
Tube, Deck and Transom Warranty



6YR
6-Year
WOWranty

STANDARD FEATURES - ALWAYS INCLUDED

ADDITIONAL FEATURES

- Portable fuel tank
- Removable table w/ integrated drink holders
- AM/FM stereo w/ MP3 port and 2 speakers
- Oversized boarding ladder
- 12 Volt Power Outlet

SAFETY

- Gates w/ posi-lock latches
- Navigational lights
- Bimini-mounted anchor lights

DECKS AND STORAGE

- Sundeck w/ flip-up change room
- 10 drink holders

SEATING

- Roto-cast furniture bases w/ drains and storage
- Comfy L-shaped couch
- Deluxe captain's chair w/ armrests and slider

LIVWELL(S)

- Aerated seat-mounted livewell or cooler
- High capacity aerator pump
- Threaded sure-lock stand pipe w/ overflow protection

CONSOLE

- Console w/ integrated drink holders and foot rest
- Ez reset circuit breakers
- Horn
- Illuminated switches and gauges
- Built-in sink
- Removable Tinted Windscreen

CONSTRUCTION

- 25" diameter 0.080 gauge aluminum pontoon tubes
- Full-length protective extruded keels on tubes
- Pressurized triple-section tube design w/ ez-drain plug
- 4 integrated tube-mounted cleats
- Extra-wide 8'6" beam
- Individually treated 3/4" 7-ply marine-grade plywood
- Through-bolted floor fastening and double-sealed seams
- 1 1/4" raised aluminum fence rails w/ 3/8" risers
- Ez-access rear gate
- Anti vibration foam-backed quiet fencing
- Performance enhancing all-aluminum v-transom
- Stainless steel transom and bow eyes
- Wave -slicing front nose cones
- Triple-protected tube design
- F-style rub rail support
- Stainless-steel elevator hardware
- Ez-drain tubes
- Footed deck supports

PREFERRED EQUIPMENT PACKAGE

These features are typically optional on most comparable models, but come standard for you to enjoy on the 23 JOURNEY.

	VALUE:
✓ PLUSH SOFT-STEP TEAKWEAVE FLOORING W/ BLACK ACCENTS	\$2,999
✓ BLACK TRIM PACKAGE: RAILS, BIMINI FRAME, TRIM, ACCENTS	\$2,199
✓ TWO-TONE ULTRA-SOFT PILLOW-TOP FURNITURE	\$1,999
✓ DELUXE RECLINING CAPTAIN'S CHAIR	\$1,449
✓ BLUETOOTH AM/FM STEREO W/ MP3 PORT AND 4 SPEAKERS	\$999
✓ OVERSIZED ALUMINUM BOARDING LADDER	\$799
✓ IN-DASH 5" GPS FISH/DEPTH FINDER	\$799
✓ REMOVABLE TINTED WINDSCREEN	\$699
✓ INTEGRATED FLIP-UP CHANGING ROOM	\$599
✓ TILT STEERING	\$599
✓ INTERIOR COURTESY LIGHT(S)	\$299
✓ DRIVER'S SEAT SLIDER	\$259
✓ DUAL USB POWER OUTLET	\$149

Total Value: \$13,847. **For a Limited Time...You Pay: \$0.**

23 JOURNEY SPORT PRO BONUS EQUIPMENT

✓ HYDRAULIC ASSIST STEERING	\$2,999
✓ STAINLESS STEEL SKI TOW BAR	\$1,999

Total Value: \$18,845. **For a Limited Time...You Pay: \$0.**



Add a few life jackets

You'll want to have extra on hand for friends and family.

Looking for more information? See: Pontoon Boats Accessories | PG 71



Add a 6-pack of flares

You never know when you'll need them in the middle of an adventure.

Scan the QR code with your mobile phone camera
TO SEE IT UP CLOSE
or visit our website: legendboats.com



E-SERIES 25 JOURNEY EXT

ALL-IN PRICE
NO EXTRA FEES*

TWO TUBE



\$135*
Per Week

\$64,999*
With Mercury 40 ELPT
CT 4-Stroke

THREE TUBE Sport Pro



\$164*
Per Week

\$78,999*
With Mercury 90 ELPT
4-Stroke

THREE TUBE Black Edition



\$172*
Per Week

\$82,999*
With Mercury 90 ELPT
4-Stroke



CHOOSE YOUR POWER



TWO TUBE

Upgrade from a 40 ELPT CT 4-Stroke Per Week

90 ELPT CT 4-Stroke	+\$6,099	+\$13
115 ELPT Pro XS CT	+\$9,399	+\$19
150 L Pro XS 4-Stroke with Stainless Steel Prop.	+\$20,599	+\$43

TRIPLE TUBE

Upgrade from a 90 ELPT 4-Stroke Per Week

90 ELPT CT 4-Stroke	+\$599	+\$1
115 ELPT Pro XS CT	+\$3,899	+\$8
150 L Pro XS 4-Stroke with Stainless Steel Prop.	+\$11,849	+\$25
200L 4-Stroke 4.8" 1.85 with Stainless Steel Prop.	+\$16,449	+\$34

SPECIFICATIONS

2 Tube / 3 Tube

Overall Length	25'0"/25'0"	Beam	102"/102"
Maximum Horsepower	150/300	Fuel Capacity	113 L / 227 L
Deck Length	23'0"/23'0"	Pontoon Length	23'8"/23'8"
Pontoon Diameter	25"/25"	Maximum Persons	13/13
Maximum Capacity	2775 lbs/2775 lbs	Weight	2850 lbs/2850 lbs

TAKE A CLOSER LOOK

These details are what make the **Legend Difference**



Food preparation station with potable-water faucet and sink.



The extended deck gives an additional 16' of space and two 360° swivel fishing seats.



Seat up to 6 of your favourite people comfortably in the forward lounge.



Discover ample storage for all of your toys and gear under every bench.



This pop-up hidden change room makes it convenient to hop in and out of your swimwear, in privacy.



Convenient book and magazine holder, accessible in any seating configuration.

WE'VE GOT YOU COVERED



Legend ProTech
Canvas Warranty



.090 Gauge
Pontoon Tubes



Lifetime
Tube, Deck and Transom Warranty



6YR
6-Year
WOWranty

STANDARD FEATURES - ALWAYS INCLUDED

ADDITIONAL FEATURES

- Portable fuel tank
- Removable table w/ integrated drink holders
- AM/FM stereo w/ MP3 port and 2 speakers
- Oversized boarding ladder
- 12 Volt Power Outlet

SAFETY

- Gates w/ posi-lock latches
- Navigational lights
- Bimini-mounted anchor lights

DECKS AND STORAGE

- Sundeck w/ flip-up change room
- 10 drink holders

SEATING

- Roto-cast furniture bases w/ drains and storage
- Comfy L-shaped couch
- Deluxe captain's chair w/ armrests and slider

LIVWELL(S)

- Aerated seat-mounted livewell or cooler
- High capacity aerator pump
- Threaded sure-lock stand pipe w/ overflow protection

CONSOLE

- Console w/ integrated drink holders and foot rest
- Ez reset circuit breakers
- Horn
- Illuminated switches and gauges
- Built-in sink
- Removable Tinted Windscreen

CONSTRUCTION

- 25" diameter 0.080 gauge aluminum pontoon tubes
- Full-length protective extruded keels on tubes
- Pressurized triple-section tube design w/ ez-drain plug
- 4 integrated tube-mounted cleats
- Extra-wide 8'6" beam
- Individually treated 3/4" 7-ply marine-grade plywood
- 1 1/4" raised aluminum fence rails w/ 3/8" risers
- Ez-access rear gate
- Anti vibration foam-backed quiet fencing
- Performance enhancing all-aluminum v-transom
- Stainless steel transom and bow eyes
- Wave-slicing front nose cones
- Triple-protected tube design
- F-style rub rail support
- Stainless-steel elevator hardware
- Ez-drain tubes
- Footed deck supports

PREFERRED EQUIPMENT PACKAGE

These features are typically optional on most comparable models, but come standard for you to enjoy on the 25 JOURNEY EXT.

	VALUE:
✓ PLUSH SOFT-STEP TEAKWEAVE FLOORING W/ BLACK ACCENTS	\$2,999
✓ BLACK TRIM PACKAGE: RAILS, BIMINI FRAME, TRIM, ACCENTS	\$2,199
✓ TWO-TONE ULTRA-SOFT PILLOW-TOP FURNITURE	\$1,999
✓ DELUXE RECLINING CAPTAIN'S CHAIR	\$1,449
✓ BLUETOOTH AM/FM STEREO W/ MP3 PORT AND 4 SPEAKERS	\$999
✓ OVERSIZED ALUMINUM BOARDING LADDER	\$799
✓ IN-DASH 5" GPS FISH/DEPTH FINDER	\$799
✓ REMOVABLE TINTED WINDSCREEN	\$699
✓ INTEGRATED FLIP-UP CHANGING ROOM	\$599
✓ TILT STEERING	\$599
✓ INTERIOR COURTESY LIGHT(S)	\$299
✓ DRIVER'S SEAT SLIDER	\$259
✓ DUAL USB POWER OUTLET	\$149

Total Value: \$13,847. **For a Limited Time...You Pay: \$0.**

25 JOURNEY EXT SPORT PRO BONUS EQUIPMENT

✓ HYDRAULIC ASSIST STEERING	\$2,999
✓ STAINLESS STEEL SKI TOW BAR	\$1,999

Total Value: \$18,845. **For a Limited Time...You Pay: \$0.**



Add a full enclosure



Add a Kuuma BBQ

Looking for more information? See: Pontoon Boats Accessories | PG 71

Scan the QR code with your mobile phone camera
TO SEE IT UP CLOSE
or visit our website: legendboats.com



Pontoon Boat Accessories



A cost-effective way to add shade to the front of your pontoon boat.



Sunblockr Shade System.

Our lightweight breathable canvas wicks moisture, dries quickly and provides an effective UV block of 98% with its outer UV coating. Enjoy your favourite spot on the lake while providing shade to your friends and family on those hot sunny days with the all new Sunblockr shade system.

\$699
(plus installation)

Includes:

- ✓ Canvas
- ✓ 2 Floor mounting Brackets
- ✓ Two fully adjustable 7/8 Inch anodized aluminum poles
- ✓ 2 adjustable Bimini Straps
- ✓ 2 adjustable Pole Straps with integrated grommets
- ✓ Carry/Storage Branded Bag

Note: Sunblockr Shade System is for use while stopped or under 5 mph. Not for use when winds exceed 20 km/h.

Pontoon Enclosures

Extend Your Boating Season.

Add an enclosure to any Legend pontoon and extend your boating season. Our quality enclosures will keep you warm and dry, protect you from the sun, help keep the bugs out and even let you go camping for the weekend.

Full Enclosure⁺ **\$5,449 to \$5,999**

Be comfortable. Be protected. Stay cleaner and drier with our custom full enclosure. You can stand tall and move around freely front to back regardless of weather conditions. A double bimini top as well as a full curtain package is included. Side screens let the breeze in and keep the bugs out.

⁺Available on the following models:

- All Fun-Series Models (Black)
- All Q-Series LE Models (Black)
- All E-Series Models (Black or Navy)
- All Q-Series Models (Black or Navy)
- All V-Series Models (Black)



All Snaps are Installed Through Thick Legend ProTech Material

Our strong material provides a solid fastening point as opposed to plastic, which snaps could tear through easily.



Synthetic Top Construction

You'll be protected rain or shine with our all-synthetic, tear-resistant bimini top construction.



Strong 1 1/4" Square Tubing and All-Metal Fittings

Unlike plastic fittings, metal ones won't crack, break, or wear out.



Double Stitching

All main zippers are double-stitched to provide lasting quality in the areas that receive the most stress.



Bug Screens with Roll Down Windows

Bug screens are included to let the breeze in and keep the bugs out.

Trailer

Triple Tube Trailer Kit

\$999 Installation included*

Add these bunks to your pontoon trailer when choosing a Sport Performance Package to support the center tube.

TA0232-16



Pontoon Mooring Cover†

\$2,149 to \$2,899

Designed to cover your new Legend pontoon from front-to-back, our pontoon mooring covers protect your interior from damaging elements while moored at the dock or while at rest on the trailer. Adjustable support poles prevent water from pooling on the cover. Easily installed, this cover snaps around the perimeter of the fence and is tailored to work around the bimini frames. These covers are built in one or two pieces depending on the pontoon model and configuration.

- Canvas Colour
All E-Series Models (Black & Navy)
- Canvas Colour
All Fun-Series Models (Black)
All Q-Series LE Models (Black & Navy)
All Q-Series Models (Black & Navy)
All V-Series Models (Black)



Motor Support

\$159

Protect your pontoon's transom and motor from trailering stress.

55-1921

Spare Tire Carrier **\$199**

TA0028-00



†Not to be used for winter storage or during trailering

* Installation, freight and taxes extra on all prices. Prices and specifications are subject to change or error. Ask your local Legend dealer for complete details.



Spare Tire and Rim

Peace of mind on the highway.

ST185/80R13C

\$499

4300426

ST185/80R13C Galvanized

\$549

4300422

Fun & Safety

Premium Legend Life Jackets \$119

Premium Legend Neoprene life jackets come in grey/black in men's sizing and blue/black in women's sizing and include a lot of great features!

Colours: Women  Men  # NEOPFD



Quick Dip Kit \$99

The essentials for a quick swim on those hot summer days.

Package includes:

- 1 Waterproof Legend Bag
- 2 Legend Towels
- 2 Legend Water Bottles

QUICK DIP KIT



Pontoon Oversized Fender Kit \$229

Package includes:

- 2 Oversized Legend Boats Fenders (8.5"x27")
- 2 6' Double Braided fender lines
- 1 x Legend Key Float
- 2 x Fender Adjuster

PONTOON OVERSIZED FENDER KIT



Deluxe Safety Kit \$349

Everything required by Transport Canada for boating on most lakes.

Total Value \$409 # DELUXE SAFETY KIT

BUY THE PACKAGE AND SAVE \$60

Package includes:

- 4 Universal Legend Life Jackets
- 50 ft Buoyant Heaving Line
- Fire Extinguisher
- 2 Mooring Lines
- Safety Whistle
- Waterproof Flashlight
- 10 lb Anchor with 50 ft Rope
- Telescopic Paddle
- Bailing Bucket

See the Transport Canada Safe Boating Guide for your safety requirements.

ABC123 ABC123

Custom Boat Numbers \$129

Colour-matched to suit any Legend model, these durable vinyl number and letter packages are easy to install and allow a variety of number and letter combinations. Our numbers meet Transport Canada's regulations for vessel license number display.

Talk to your dealer for more information.



Pontoon Starter Kit \$499

In all the excitement of buying a new boat, you may have forgotten some essential accessories. We've packaged together everything you need to begin the boating lifestyle safely and comfortably.

Total Value \$607 # STARTER KIT - BOATS

BUY THE PACKAGE AND SAVE \$108

Package includes:

- Deluxe Safety Kit
- Oversized Fender Kit
- Custom Boat Numbers

Package of 6 nylon fender cleats \$109 installed



Flare Kit \$119

Our economical option to be compliant with Transport Canada requirements. Contains 6 hand held red flares packaged in a sealed plastic bag. Average burn time: 3 minutes each, 18 minutes total. Brightness: 700 candelas. 6 TYPE-C Signals.

891-594

ABC123 ABC123



Legend Portable Marine Grill Kit by Kuuma

Add this Stainless Steel BBQ to any pontoon boat. Cook onboard or take it ashore.

Features:

- Up to 9,000 BTU's
- Total cooking area 165 sq. in.
- Stainless steel tube burner
- All 304 stainless steel construction
- Fold away legs and locking lid
- Locking removable drip tray
- Push button ignition
- Removable post mount and hardware
- Propane cylinder not included

\$759 plus installation* (Approx. 1 hour)

Includes:

Carry bag for portability plus removable post mount and hardware.

BBQPOSTKIT



Minn Kota DeckHand 40 Electric Anchor Winch Kit

With quick-release bracket, davit, DeckHand 40 remote switch and 20 lbs river anchor.

Automatically raise and lower your anchor at the touch of a button. DeckHand 40 has a 40-lb anchor capacity. Pre-spooled with 100 feet of 800-lb test nylon rope. Universal davit can be mounted at base of DeckHand or in remote position on boat deck. Davit also stows anchor horizontally to eliminate anchor swing. Anchor shackle allows for quick changes between anchors. A special anti-drag system senses the bottom to allow for controlled drifting.

\$919 plus installation* (Approx. 3 hrs)

DECKHAND 40 KIT



ROKK Wireless - Active **\$255 plus installation*** (Approx. 1 hr)

Securely holds and wirelessly charges your phone even in the toughest conditions. The high-grip, self-aligning jaws ensure your phone is held tightly and in the optimum charging position every time. Compatible with wireless charging enabled phones of all sizes from all major brands including Samsung, Apple and many more.

SC-CW-04F



Pump-Out Toilet Kit with 2.5 gallon tank

\$315 plus installation* (Approx. 3 hrs)

Includes:

- Mounting Brackets
- 1.5" MSD Fittings
- Built-in deodorant compartment
- Holding tank level indicator

51-9108554392

*Must be installed with pump-out through-fence fittings. Only available on certain models, see dealer for details.



FINANCE YOUR INVESTMENT

Get the absolute best rates on your available credit with Legend Financing. From incredibly low rates to approvals on subprime loans, we can get you into the boat of your dreams.

ASK YOUR DEALER HOW MUCH YOU COULD QUALIFY FOR WITH LEGEND FINANCING.

PROTECT YOUR INVESTMENT

Get the best peace of mind that money can buy with Legend Insurance. We'll protect your boat from bow to stern, all of your accessories, add-ons, the trailer.. the whole package. Stop worrying and get back to boating.

ASK YOUR DEALER ABOUT PURCHASING YOUR OWN LEGEND PROTECTION PLAN.

CARE FOR YOUR INVESTMENT

A Legend hull comes with a lifetime warranty. That's a long time to live with your boat. That's why we've invested in creating a line of boat care products designed to keep your boat healthy and shiny.

ASK YOUR DEALER TO KEEP YOU STOCKED WITH LEGEND CARE PRODUCTS FOR YOUR BOAT.



 = Headquarters Whitefish, Ontario

Freight Charges by Zone.

Zone	ON, QC	MB, NB, PE, NS	SK	AB	BC	NL
16' to 22' Pontoons	No Fee	\$1,350	\$1,600	\$2,250	\$2,600	\$4,200
23' to 26' Pontoons	No Fee	\$1,700	\$2,050	\$2,800	\$3,250	\$5,250
V-Series AquaTower	No Fee	\$3,400	\$4,150	\$5,600	\$6,550	\$10,500



*We only print one version of our catalogue for all of Canada. Customers outside of Ontario and Quebec will have a small fee for freight. Visit us at legendboats.com for your local, ALL-IN, No-Fee Price including current promotions and current premium package pricing.

No Fee Setup and Orientation

All of the components of your pontoon boat and motor package have been specially chosen for compatibility. The professionals at your authorized Legend Dealership will help you to select the proper motor and options for your package. They will then prepare your package to ensure proper and worry-free operation. All this, at no additional charge to you, thanks to our All-In Pricing.

The setup includes the following items: control box, shift cables, cranking battery, aluminum propeller, outboard installation and set-up. Your dealer will prepare your package and give you a full orientation to ensure trouble-free boating from day one.

* Freight charges outside of Zone 1 (Ontario and Quebec), licenses, and taxes are extra on all prices. Delivery is available at an additional cost. Payments are calculated with licenses, bank registration charges, and taxes as your downpayment at 6.99% over 1,040 weeks for amounts \$23,000 and higher, 6.99% over 780 weeks for amounts between \$10,000 and \$22,999, and 7.99% over 364 weeks for amounts less than \$10,000 (at time of printing). All financing is OAC. Payments will vary by province. All Choose your power prices are in addition and only available with the purchase of the specific package they are listed with; they are not stand alone motor prices. Towing weights are approximate and are calculated based on a full tank of fuel and 200 pounds for batteries and gear. Speed tests were done with 2 persons, 50 pounds of gear and proper weight distribution. Actual performance may vary. Prices, rates and specifications are subject to change or error. Pictures may show options. Ask for complete details. All illustrations, photographs and specifications are based on the latest product information. See actual boat for complete accuracy. Legend reserves the right to make changes at any time, without notice, in prices, colours, materials, equipment, specifications and models, and to discontinue models or equipment. For information on accessories, contact your local Legend dealer.

Please refer to your provincial laws regarding trailer brakes and ensure that your boat package and tow vehicle comply with the regulations in the provinces you intend to travel in. Brakes may be required in certain circumstances and can be purchased as an option or your trailer model can be upgraded before delivery if brakes are not available on certain trailers. It is your sole responsibility to ensure you comply with all provincial brake requirements for vehicles and also that you always operate your tow vehicle safely. Legend Boats accepts no responsibility with regards to provincial compliance.

At legendboats.com, you'll find a fully-priced electronic version of our catalogue as well as additional pictures and special offers. Always distribute passengers and cargo evenly, wear a PFD and follow the rules for safe boating. Visit: www.tc.gc.ca/boatingsafety

Choose Your Power.

Ask your Legend dealer to help you select the Mercury outboard that best suits your needs from the motor choices below. Use the chart that corresponds with the standard engine packaged with your boat model. Simply add the amount to the standard package price to have the motor that is perfect for you.

FROM A 25 ELPT 4-STROKE TO

- 30 ELPT 4-Stroke..... **\$2,199**
- 40 ELPT 4-Stroke **\$4,299**
- 40 ELPT CT 4-Stroke **\$4,899**
- 50 ELPT 4-Stroke..... **\$5,799**
- 50 ELPT CT 4-Stroke **\$6,399**
- 60 ELPT 4-Stroke..... **\$7,299**
- 60 ELPT CT 4-Stroke **\$7,899**
- 90 ELPT 4-Stroke..... **\$10,399**
- 90 ELPT CT 4-Stroke **\$10,399**

FROM A 40 ELPT CT 4-STROKE TO

- 50 ELPT 4-Stroke..... **\$899**
- 50 ELPT CT 4-Stroke **\$1,499**
- 60 ELPT 4-Stroke..... **\$2,399**
- 60 ELPT CT 4-Stroke **\$2,999**
- 90 ELPT 4-Stroke..... **\$5,499**
- 90 ELPT CT 4-Stroke **\$6,099**
- 115 ELPT 4-Stroke **\$8,299**
- 115 ELPT ProXS CT 4-Stroke..... **\$9,399**
- 150L 4-Stroke..... **\$13,899**

E = Electric Start
 L = Long Shaft
 XL = Extra Long Shaft
 PT = Power Trim and Tilt
 CT = Command Thrust

FROM A 90 ELPT 4-STROKE TO

- 90 ELPT CT 4-Stroke **\$599**
- 115 ELPT 4-Stroke **\$2,799**
- 115 ELPT ProXS CT 4-Stroke..... **\$3,899**
- 150L 4-Stroke..... **\$8,399**
- 150L Pro XS with stainless steel propeller ... **\$11,849**
- 175L Pro XS 4.8" 1.85..... **\$15,149**
- 200L FourStroke 4.8" 1.85..... **\$16,449**
- 200L Pro XS 4.8" 1.85 **\$18,249**
- 200L FourStroke DTS 4.8" 1.85 **\$21,349**
- 225L FourStroke 4.8" 1.85..... **\$23,049**
- 250L FourStroke 5.44" 1.75..... **\$24,749**
- 225L FourStroke DTS 4.8" 1.85 **\$27,949**
- 250L FourStroke DTS 5.44" 1.75 **\$29,749**

FROM A 115 EXLPT 4-STROKE TO

- 115EXLPT Pro XS CT **\$1,099**
- 150XL 4-Stroke **\$5,599**
- 150XL Pro XS..... **\$9,049**
- 175XL Pro XS 4.8" 1.85 **\$12,349**
- 200XL 4-Stroke 4.8" 1.85..... **\$13,649**
- 200XL Pro XS 4.8" 1.85 **\$15,449**
- 225XL 4-Stroke 4.8" 1.85..... **\$20,249**
- 250XL 4- 5.44" 1.75 **\$21,949**
- 250XL Pro XS 5.44" 1.75..... **\$22,349**
- 300XL 4-Stroke 5.44" 1.75 **\$24,149**
- 300XL Verado 5.44" 1.85..... **\$34,749**
- 350XL Verado 5.44" 1.75 HD 1, 3..... **\$47,549**



6-10 YEAR WOWRANTY

A warranty that makes you say wow!

Sure we've always had the industry's best warranties on the structural parts of our boats, like the welds, main riveted seams, pontoon tubes, decks and transoms, but what about everything else in your boat? Well, most companies offer a 1 year warranty on the other stuff and some offer up to three years. Although this is very respectable, we figured we'd double that. Legend's 6 Year WOWranty covers most other components for 6 long years, plus our Q-Series LE's, Q-Series and V-Series pontoon boats offer a 10 year warranty. That gives you a lot of worry-free, quality, memory-makin' time.

*For more details, visit
www.legendboats.com/wowranty



3-year Mercury Warranty

Every Mercury 4-Stroke outboard is backed by a 3-year standard limited warranty to give you peace of mind. Ask us about Mercury Product Protection to extend your Mercury Factory Warranty for up to 8 years.*



Lifetime Floor and Deck Warranty

A thicker floor means a stronger boat. With 7 layers of marine-grade plywood, each individually treated, we can offer a lifetime warranty against rotting.



Legend Glide-On Trailer Warranty 5+1 Year

Every Legend Glide-On trailer by Shoreland'r is backed by a 5 year frame warranty and 1-year complete tongue to tail light warranty.*



Legend ProTech 5+1 Year Canvas Warranty

Legend ProTech All-Synthetic Tear and Mildew-Resistant Material is backed by a 5 Year Warranty and guaranteed not to rot or fade for five years. Stitching, zippers, seams and other top components are covered for 1 year.



Lifetime Tube, Deck, and Transom Warranty

Legend pontoon boats are backed by a lifetime warranty on the pontoon tubes, deck, and transom so you will be assured of hassle-free boating for years to come. Plus our exciting 6 Year WOWranty now extends coverage on all your key components.*



Our Story

In 1968, two young friends, Vic Duhamel and Carl Dewar decided to start a business. Over the years, they sold products ranging from tires to RVs before realizing how much they loved helping people onto the water and into the boating lifestyle. There were two big issues that they found. Buying a boat was much too difficult, and there really wasn't a boat designed for the Canadian environment.

In 1986, with the goal of simplifying the ownership experience and offering a boat designed by Canadians and built for Canadians, Legend Boats was born. Vic and Carl started by creating affordable and complete boat, motor and trailer packages. They beefed up their boats with thicker aluminum and made full stand-up tops standard on every full windshield model. They wanted to make sure every Legend boat could handle the rugged Canadian climate while keeping boaters safe and comfortable.

Seven children and fifteen grandchildren later, Legend is proud to have the same owners and same focus on family values as it did over nearly four decades ago when Vic and Carl decided to dedicate their lives to making it easier and more affordable to get on the water. We can't wait to welcome you to the Legend Family so that you can start creating your memories!



FAMILY AND FISHING BOATS

DECK BOATS

PONTOON BOATS

EXPLORE ALL LEGEND PRODUCTS AT [LEGENDBOATS.COM](https://www.legendboats.com)

Legend Boats Headquarters | 4795 Regional Rd 55, Whitefish ON, POM 3E0 | Email: info@legendboats.com