

# V-SERIES



**MEET THE ULTIMATE LUXURY PONTON BOAT.**

V-Series Lounge Sport Pro • V-Series Dual Lounge Sport Pro • V-Series Entertainer Sport Pro • V-Series Aqua Tower Sport Pro

# We do things a little differently.

## Is Legend Canadian?

Yes. We are a Canadian company. We live and play where you do. We understand boating in the unique Canadian wilderness. It's different here, and that's why each and every model is designed by Canadians and **built for Canadians**. From thicker aluminum to full stand-up tops, we make sure that Mother Nature is no match for your Legend.

## Are Legend boats built in Canada?

Yes and No. Our product developers seek out quality manufacturers throughout North America who can produce in the most **cost effective** way. By outsourcing component manufacturing and then performing all final assembly, sales, service, and warranty right here in Canada, we ensure that the end product is fit for the Great Canadian outdoors.

## Are the printed catalogue prices MSRP?

No. The printed price is our **hassle-free, lowest price**. We provide it up front, so there's no need for uncomfortable negotiations. To top it off, aside from a small variance in freight, our low prices are the same across Canada. Now you can make an informed, easy, and no-pressure decision in the comfort of your own home.

## It seems like everyone's warranty is pretty much the same. Is that the case?

Well, at first glance it appears that most companies are offering some sort of lifetime warranty, and it's easy to assume that all warranties are the same, but the devil is in the details. By details, we're talking about the fine print. Our **WOWranty** combined with our **Lifetime** hull warranties give you the absolute best warranty coverage, bar none. Not only do we cover more stuff for longer, but the best part is that everything is taken care of right here in Canada.

## Someone told me Legend boats are underpowered. Is that true?

No. You can actually power your boat with the engine of your choice. Each Legend boat model is designed and packaged with a **Mercury** motor **large enough** to get you and a friend on the water to experience the boating lifestyle with minimal investment. We understand that everyone's boating needs are different, and that the packaged motor may not suit your needs. That's why we make it easy to choose the perfect Mercury outboard to power all of your on-water activities. So, whether you want to troll all day, bring the kids tubing, cruise with your family or pull two water skiers, we'll help you select the engine that's just right.

## Why do you only package your boats with Mercury outboards?

We partner exclusively with Mercury because of their proven **quality, value, reliability, service and features**. With the large number of clients we help onto the water each year in Canada, other outboard manufacturers would love us to package with their brand. Mercury appreciates our business so much, they offer us exclusive savings that we simply pass on to you. That's how we package with the oldest, largest, number one outboard engine brand at such an incredible price. On top of a great price, by purchasing a complete custom package you'll enjoy consistent performance and one-location servicing.

## We give you the most standard equipment

We've outfitted our boats with more equipment for less. **Things that you would have to pay thousands of dollars extra for with other brands are simply part of our value-packed models.** Many of our Legend packages have standard features like Dura-deck vinyl floors, automatic bilge pumps, and a bunch of other great stuff that is optional in other brands. When it comes to value, we're proud to say that nobody compares. We have more equipment for less than any other brand!

## You claim your quality is good but your prices are low. How is that possible?

You get what you pay for right? Well in most cases, yes. But at Legend, we never sacrifice quality in order to reduce cost. Our use of quality brand name products in our packages such as Shoreland'r trailers, Minn Kota trolling motors and Mercury outboards - the largest brands in boating - speak for themselves. **To keep prices low, we build fewer models in higher volumes and package each model with the same popular features.** By purchasing thousands of each component, such as full stand-up tops, fish finders and GPS', we can offer you unbelievably high quality at incredibly low prices. That's how we do it.

## Why doesn't everyone put pricing in their catalogues?

That's a great question. We don't know. It could be because it takes a lot more work and effort to include all of the details required when you're sharing a price. Or, perhaps nobody else does it because they have something to hide. But we're only guessing. **All we know is that we're so confident that we offer the absolute best value in Canada that we publish our complete, hassle-free, all-in pricing for all to see.**

You can find our prices in our full line brochure, on our extensive website and in all of our advertisements. We even print the pricing of our most popular options so you can "build" your own Legend. Nothing is hidden and it's all in Canadian dollars. We've done the work for you and given you our lowest price right up front.





## Let us help you choose the Mercury motor that's right for you!

- 1** Each pontoon boat shows a list of motor choices with pricing and weekly payments.
- 2** We've highlighted the most popular engines on each model to make your motor choice easy.
- 3** Choose the motor that gives you the efficiency you want or the speed desired for the activities you plan to enjoy.

### CHOOSE YOUR POWER

Upgrade from a 90 ELPT 4-Stroke to a: Per Week

90 ELPT CT 4-Stroke	+\$599	+\$1
115 ELPT Pro XS CT	+\$3,899	+\$7
150L 4-Stroke	+\$8,399	+\$15



# Are You All-In?

## CANADA'S **ONLY** FULLY-PRICED CATALOGUE

**In a world where we are bombarded with fees, surcharges and extras, wouldn't it be nice if a company would just tell us what it's going to cost up front? Legend Boats is that company. Our prices are All-In!**

That's right! No administration fees. No hidden freight fees. No rigging fees. Since 1987, our customers have enjoyed having our package pricing at their fingertips so they could figure out what their perfect Legend boat was going to cost right down to the penny. Now, there's no more figuring out. With one simple up-front price, you choose your motor and any options you want, then simply add the taxes. We would have gotten rid of those too but we thought it may have been frowned upon. It really couldn't get any more simple, open, honest or transparent, and we feel that you will appreciate our All-In Pricing. Using your mobile phone camera simply scan the specific QR code of the model of your choice to access all available pricing.

\*We only print one version of our catalogue for all of Canada. Customers outside of Ontario and Quebec will have a small fee for freight. For details, visit us at [legendboats.com](http://legendboats.com) for your local, ALL-IN, No-Fee Price including current promotions.



## Lifetime Limited Transferable Structural Warranty.

Exclusive to Q-Series LE, Q-Series and V-Series

### Lifetime Warranty Includes:

Pontoons, crossbeams, seat frames, motor mounts, wood decking and rail structure.

10 Year Limited\* Transferable Bow to Stern warranty on all other components on your boat.

For more details, visit [www.legendboats.com/wowranty](http://www.legendboats.com/wowranty)



## Q-Series LE, Q-Series And V-Series Construction



### EZ-Flow Ventilation

The aluminum seat frames have external and internal air flow that dries out the seat compartments while underway or at the dock.



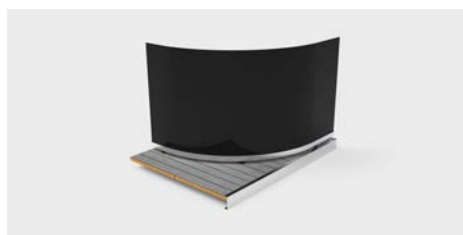
### Thick Lifetime Decking

A thicker floor means a stronger pontoon. With 7 layers, each individually treated, we can offer a Lifetime Warranty against rotting. Each seam is sealed with LockOut sealing adhesive and is lined up over a cross member for exceptional dryness.



### Suspension Seating

This unique suspension seating is made up of a multi-directional stretch substructure backing, an added adhesive layer, followed by a heavy marine grade vinyl making up for a 50-ounce total vinyl covering, giving your passengers a smoother ride every time.



### Thick 40 Gauge Quiet and Raised Fences

All thick .40 gauge fence panels are installed with anti-vibration foam to keep them quiet. They are installed with 3/8" risers to provide water runoff and exceptional ventilation.

### EZ-Drain Tubes

Each section of the tubes are connected to one another by a small channel that allows any condensation to drain completely to the back of the tube and out of our Sure-Lock threaded drain plug.

### Triple-Protected Tube Design

Our pontoons are divided into three separate compartments and sealed, making them air tight even in the event of a puncture. If the air can't get out, water can't get in.

### Stainless Steel Fasteners

Stainless steel fasteners are used to attach the decking to the substructure. These provide a far stronger hold than pop rivets for years of problem free boating.

### Wave-Slicing Wide Nose Cones

The wide nose cones deflect spray keeping you dry on the water, while the lifting fins provide the ultimate performance for a smooth ride every time.

### Robust Construction

This solid frame construction includes a double bolted transom, double solid full risers that are all connected together with double bolted .190 U-bar crossbeams on 2 tube pontoon models or .125 Hat channel crossbeams on 3 Tube pontoon models. We use .250 gauge U-bars at the bow and stern for unbeatable strength.



### Thick Side Protector Keel (3-Tube Models Only)

Our thick side protector keels on the nose cones provide great protection against accidental side impacts at the dock.



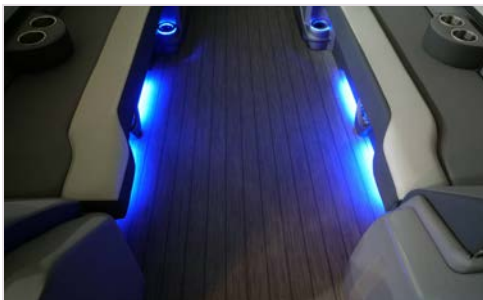
### AT THE HELM

Comfort on the V-Series starts with the fully upgraded captain's helm: Fibreglass helmstands. Touchscreen Bluetooth stereos with SiriusXM. Tilt steering. Fully adjustable, 360° swivel, high-backed captain's chairs. Inlaid blue console lighting.



### FEEL THE VIBRATIONS

The speakers on the V-Series are decked out in chrome, and inlaid with blue lights for your evening enjoyment. With 4-6 speakers and 5-channel amp, they'll be able to feel the vibrations back on shore.



### BABY-SOFT LUXURY VINYL

Every cushion is upholstered with ultra-soft vinyl. Easy-to-clean. Plush. The Soft-step TeakWeave flooring feels absolutely great on your feet. Make sure to go barefoot to get your full money's worth.



### SPORT PRO PRESTIGE PACKAGE

Three 27" tubes with performance enhancing lifting strakes • Full-length centre tube • Integrated transom • Underfloor aluminum performance shield • Hydraulic assist steering • Stainless steel ski/wakeboard bar



### SMART DASHBOARD

This 7" configurable touchscreen has all of your gauges and controls. Control your lights, your livewell, your bilge, and more. All from one device.



### SKI TOW BAR

With the built-in tow bar, you're all set to tackle any water sport. Water skiing. Wakeboarding. Tubing and Kneeboarding. There's no limit to the fun to be had.

## WE'VE GOT YOU COVERED



**Legend ProTech**  
Canvas Warranty



**.090 Gauge**  
Pontoon Tubes



**Lifetime**  
Tube, Deck and Transom Warranty

+



**10-Year**  
WOWranty

# V-SERIES LOUNGE

Sport Pro with Prestige Package and Mercury 115 EXLPT 4-Stroke

**ALL-IN PRICE**  
NO EXTRA FEES\*

**\$216\***  
 Per Week

**\$103,999\***



ALSO AVAILABLE IN THESE GREAT COLOURS:



## CHOOSE YOUR POWER

Upgrade from a 115 EXLPT 4-Stroke



Per Week

Most Popular

115 EXLPT Pro XS CT	+\$1,099	+\$2
150 XL 4-Stroke	+\$5,599	+\$12
200XL 4-Stroke 4.8" 1.85	+\$13,649	+\$28



## SPECIFICATIONS

Overall Length	24'6"	Beam	102"
Maximum Horsepower	250	Fuel Capacity	219 L
Deck Length	23'3"	Pontoon Length	22'0"
Pontoon Diameter	27"	Maximum Persons	13
Maximum Capacity	2980 lbs	Weight	3050 lbs

\*We only print one version of our catalogue for all of Canada. Customers outside of Ontario and Quebec will have a small fee for freight. For details, visit us at [legendboats.com](http://legendboats.com) for your local, ALL-IN, No-Fee Price including current promotions.



## TAKE A CLOSER LOOK

These details are what make the **Legend Difference**



Twin lounging sofas are the perfect spot for your family and friends to catch some sun.



Seat up to 6 of your favourite people around this dinette for a meal or a game.



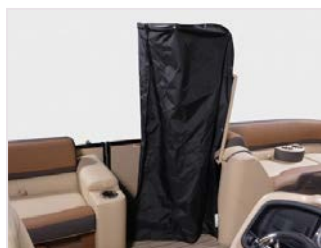
Tilt steering, Bluetooth stereo, motor gauges, touchscreen GPS fish/depth finder.



Catch some waves and ride your wake with the built-in ski tow bar.



Ultrafine Soft-Touch Furniture with Suspension System



Hidden pop-up changing room. Change in or out of your swimwear anywhere, anytime.

### WE'VE GOT YOU COVERED



**Legend ProTech**  
Canvas Warranty



**.090 Gauge**  
Pontoon Tubes



**Lifetime**  
Tube, Deck and Transom Warranty



**10YR**  
10-Year  
WOWrnty

## STANDARD FEATURES - ALWAYS INCLUDED

### ADDITIONAL FEATURES

- Removable table w/ integrated drink holders
- Integrated changeroom
- LED interior mood lighting under seats
- Oversized boarding ladder
- Upgrade stereo to Bluetooth compatibility
- Extra-large bimini top w/ 1 1/4" anodized aluminum frame

### SAFETY

- Gates w/ posi-lock latches
- Navigational lights
- Bimini-mounted anchor lights
- Docking lights

### DECKS AND STORAGE

- 9 drink holders
- Rich teak and ivory vinyl rear decks for easy cleanup
- Ez-clean rear fun zone for watersports and entertaining
- Large double-wide sundeck w/ flip-up changeroom

### SEATING

- Driver's high-back recliner w/ headrest and armrests
- Comfy L-shaped couch
- 2 front rounded couches for comfy lounging

### CONSOLE

- Chrome-bezeled gauges on a charcoal-black dashboard
- Ez reset circuit breakers
- Illuminated switches and gauges
- Removable Tinted Windscreen

### CONSTRUCTION

- Performance enhancing all-aluminum v-transom
- Ez-access rear gate
- Anti vibration foam-backed quiet fencing
- 4 integrated tube-mounted cleats
- 25" diameter 0.080 gauge aluminum pontoon tubes
- Full-length protective extruded keels on tubes
- Pressurized triple-section tube design w/ ez-drain plug
- Wave -slicing front nose cones
- Triple-protected tube design
- F-style rub rail support
- Ez-drain tubes
- Plush soft-step teakweave flooring with black accents

## PREFERRED EQUIPMENT PACKAGE

These features are typically optional on most comparable models, but come standard for you to enjoy on the LOUNGE SPORT PRO WITH PRESTIGE PACKAGE.

	VALUE:
✓ IN-DASH SMART 80 MEDALLION 7" CONFIGURABLE TOUCHSCREEN	\$3,499
✓ HYDRAULIC ASSIST STEERING	\$2,999
✓ PLUSH SOFT-STEP TEAKWEAVE FLOORING W/ BLACK ACCENTS	\$2,999
✓ BLACK TRIM PACKAGE: RAILS, BIMINI FRAME, TRIM, ACCENTS	\$2,199
✓ STAINLESS STEEL SKI TOW BAR	\$1,999
✓ INTERIOR BLUE ICE LED MOOD LIGHTING PACKAGE	\$1,999
✓ ADMIRAL'S HIGH BACK RECLINER	\$1,699
✓ PERFORMANCE ENHANCING LIFTING STRAKES	\$1,499
✓ LED BLUETOOTH/AM/FM/SIRIUSXM STEREO W/ USB/AUX + 4 SPEAKERS	\$1,499
✓ OVERSIZED STAINLESS STEEL BOARDING LADDER	\$1,399
✓ CUSTOM DOCKING LIGHT MODULE W/ NAVIGATION LIGHTS	\$1,399
✓ GARMIN ECHOMAP 7" GPS W/ CANADA LAKEVÜ G3 MAPPING	\$1,299
✓ BLUE UNDER-DECK LED PERIMETER LIGHTING	\$999
✓ ULTRAFINE SOFT-TOUCH FURNITURE W/ SUSPENSION SYSTEM	\$999
✓ REMOVABLE TINTED WINDSCREEN	\$699
✓ INTEGRATED FLIP-UP CHANGING ROOM	\$599
✓ TILT STEERING	\$599
✓ DUAL BATTERY SELECTOR	\$499
✓ DRIVER'S SEAT SLIDER	\$259
✓ 12 VOLT POWER OUTLET	\$139

Total Value: \$29,280. **For a Limited Time...You Pay: \$0.**



### Sport Pro Prestige Package

Three 27" tubes with performance enhancing inner and outer lifting strakes • Center tube with integrated transom • Underfloor aluminum performance shield • Hydraulic assist steering • Stainless steel ski/wakeboard bar

Scan the QR code with your mobile phone camera  
**TO SEE IT UP CLOSE**  
or visit our website: [legendboats.com](http://legendboats.com)



V-SERIES

# DUAL LOUNGE

Sport Pro with Prestige Package and Mercury 115 EXLPT 4-Stroke

ALL-IN  
PRICE  
NO EXTRA FEES\*

\$220\*  
Per Week

\$105,999\*



ALSO AVAILABLE IN THESE GREAT COLORS:



## CHOOSE YOUR POWER

Upgrade from a 115 EXLPT 4-Stroke



Per Week

Most  
Popular

115 EXLPT Pro XS CT	+\$1,099	+\$2
150 XL 4-Stroke	+\$5,599	+\$12
200XL 4-Stroke 4.8" 1.85	+\$13,649	+\$28



## SPECIFICATIONS

Overall Length	24'6"	Beam	102"
Maximum Horsepower	250	Fuel Capacity	219 L
Deck Length	23'3"	Pontoon Length	22'0"
Pontoon Diameter	27"	Maximum Persons	13
Maximum Capacity	2980 lbs	Weight	3050 lbs

\*We only print one version of our catalogue for all of Canada. Customers outside of Ontario and Quebec will have a small fee for freight. For details, visit us at [legendboats.com](http://legendboats.com) for your local, ALL-IN, No-Fee Price including current promotions.



## TAKE A CLOSER LOOK

These details are what make the **Legend Difference**



Transformable lounger: Part bed, part sofa.



Flip the dual lounger's back to create an extra large sofa bed.



Why choose? Have a daybed and an L-shaped couch.



Make an impression when the sun goes down.



You could store a bed under the bed. That's how spacious it is.



We're not kidding. The kids will definitely be playing hide-and-seek in here.

### WE'VE GOT YOU COVERED



**Legend ProTech**  
Canvas Warranty



**.090 Gauge**  
Pontoon Tubes



**Lifetime**  
Tube, Deck and Transom Warranty



**10YR**  
10-Year  
WOWranty

## STANDARD FEATURES - ALWAYS INCLUDED

### ADDITIONAL FEATURES

- Removable table w/ integrated drink holders
- LED interior mood lighting under seats
- Upgraded to tilt steering
- Oversized boarding ladder
- Upgrade stereo to Bluetooth compatibility

### SAFETY

- Gates w/ posi-lock latches
- Navigational lights
- Bimini-mounted anchor lights
- Docking lights

### DECKS AND STORAGE

- Rich teak and ivory vinyl rear decks for easy cleanup
- Ez-clean rear fun zone for watersports and entertaining
- Large double-wide sundeck w/ flip-up changeroom

### SEATING

- Driver's high-back recliner w/ headrest and armrests
- Comfy L-shaped couch
- 2 chaise lounges w/ integrated storage
- Ultra-soft pillow-top furniture

### CONSOLE

- Chrome-bezeled gauges on a charcoal-black dashboard
- Ez reset circuit breakers
- Illuminated switches and gauges
- Horn
- Removable Tinted Windscreen

### CONSTRUCTION

- Performance enhancing all-aluminum v-transom
- Ez-access rear gate
- Anti vibration foam-backed quiet fencing
- Large 27" diameter .090 gauge pontoon tubes
- Through-bolted floor fastening and double-sealed seams
- 4 integrated tube-mounted cleats
- Full-length protective extruded keels on tubes
- Pressurized triple-section tube design w/ ez-drain plug
- F-style rub rail support
- Ez-drain tubes
- Footed deck supports
- Extra-large bimini top w/ 1 1/4" anodized aluminum frame
- Plush soft-step teakweave flooring with black accents

## PREFERRED EQUIPMENT PACKAGE

These features are typically optional on most comparable models, but come standard for you to enjoy on the DUAL LOUNGE SPORT PRO WITH PRESTIGE PACKAGE.

	VALUE:
✓ IN-DASH SMART 80 MEDALLION 7" CONFIGURABLE TOUCHSCREEN	\$3,499
✓ HYDRAULIC ASSIST STEERING	\$2,999
✓ PLUSH SOFT-STEP TEAKWEAVE FLOORING W/ BLACK ACCENTS	\$2,999
✓ BLACK TRIM PACKAGE: RAILS, BIMINI FRAME, TRIM, ACCENTS	\$2,199
✓ STAINLESS STEEL SKI TOW BAR	\$1,999
✓ INTERIOR BLUE ICE LED MOOD LIGHTING PACKAGE	\$1,999
✓ LED BLUETOOTH AM/FM/SIRIUSXM + 5-CHANNEL AMP AND 6 SPEAKERS	\$1,899
✓ ADMIRAL'S HIGH BACK RECLINER	\$1,699
✓ PERFORMANCE ENHANCING LIFTING STRAKES	\$1,499
✓ OVERSIZED STAINLESS STEEL BOARDING LADDER	\$1,399
✓ CUSTOM DOCKING LIGHT MODULE W/ NAVIGATION LIGHTS	\$1,399
✓ GARMIN ECHOMAP 7" GPS W/ CANADA LAKEVÜ G3 MAPPING	\$1,299
✓ BLUE UNDER-DECK LED PERIMETER LIGHTING	\$999
✓ ULTRAFINE SOFT-TOUCH FURNITURE W/ SUSPENSION SYSTEM	\$999
✓ REMOVABLE TINTED WINDSCREEN	\$699
✓ INTEGRATED FLIP-UP CHANGING ROOM	\$599
✓ TILT STEERING	\$599
✓ DUAL BATTERY SELECTOR	\$499
✓ DRIVER'S SEAT SLIDER	\$259
✓ 12 VOLT POWER OUTLET	\$139

Total Value: \$29,680. **For a Limited Time...You Pay: \$0.**



### Sport Pro Prestige Package

Three 27" tubes with performance enhancing inner and outer lifting strakes • Center tube with integrated transom • Underfloor aluminum performance shield • Hydraulic assist steering • Stainless steel ski/wakeboard bar

Scan the QR code with your mobile phone camera  
**TO SEE IT UP CLOSE**  
or visit our website: [legendboats.com](http://legendboats.com)



V-SERIES

# ENTERTAINER

Sport Pro with Prestige Package and Mercury 115 EXLPT 4-Stroke

ALL-IN PRICE

NO EXTRA FEES\*

\$234\*

Per Week

\$112,999\*



ALSO AVAILABLE IN THESE GREAT COLOURS:



## CHOOSE YOUR POWER

Upgrade from a 115 EXLPT 4-Stroke



Per Week

Most Popular

115 EXLPT Pro XS CT	+\$1,099	+\$2
150 XL 4-Stroke	+\$5,599	+\$12
200XL 4-Stroke 4.8" 1.85	+\$13,649	+\$28



## SPECIFICATIONS

Overall Length	26'6"	Beam	102"
Maximum Horsepower	350	Fuel Capacity	219 L
Deck Length	25'3"	Pontoon Length	24'0"
Pontoon Diameter	27"	Maximum Persons	17
Maximum Capacity	3270 lbs	Weight	3200 lbs

\*We only print one version of our catalogue for all of Canada. Customers outside of Ontario and Quebec will have a small fee for freight. For details, visit us at legendboats.com for your local, ALL-IN, No-Fee Price including current promotions.

## TAKE A CLOSER LOOK

These details are what make the **Legend Difference**



Fiberglass table securely and provides ample space for drinks, snacks, and games.



Integrated wireless charging station keeps your phone safe while it charges.



Under the table, you'll find a cooler box and 4 additional cup holders.



How many LCD screens does a pontoon boat need? We've settled on 3.



L-shaped couch with tremendous integrated storage, speakers, and cupholders.



Both of the table's benches can be inverted to face the other way.

### WE'VE GOT YOU COVERED



**Legend ProTech**  
Canvas Warranty



**.090 Gauge**  
Pontoon Tubes



**Lifetime**  
Tube, Deck and Transom Warranty



**10YR**  
10-Year  
WOWrnty

## STANDARD FEATURES - ALWAYS INCLUDED

### ADDITIONAL FEATURES

- Removable table w/ integrated drink holders
- Integrated changeroom
- AM/FM stereo w/ MP3 port and 3 speakers
- LED interior mood lighting under seats
- Upgraded to tilt steering
- Oversized boarding ladder
- Upgrade stereo to Bluetooth compatibility
- 12 Volt Power Outlet

### SAFETY

- Gates w/ posi-lock latches
- Navigational lights
- Bimini-mounted anchor lights
- Docking lights

### DECKS AND STORAGE

- 9 drink holders
- Rich teak and ivory vinyl rear decks for easy cleanup
- Ez-clean rear fun zone for watersports and entertaining
- Large double-wide sundeck w/ flip-up changeroom

### SEATING

- Driver's high-back recliner w/ headrest and armrests
- Comfy L-shaped couch
- 2 front rounded couches for comfy lounging
- 2 chaise lounges w/ integrated storage
- Ultra-soft pillow-top furniture
- Driver's Seat Slider

### CONSOLE

- Ez reset circuit breakers
- Built-in sink
- Removable Tinted Windscreen

### CONSTRUCTION

- Performance enhancing all-aluminum v-transom
- Ez-access rear gate
- Anti vibration foam-backed quiet fencing
- 4 integrated tube-mounted cleats
- Full-length protective extruded keels on tubes
- Pressurized triple-section tube design w/ ez-drain plug
- Wave-slicing front nose cones
- F-style rub rail support
- Ez-drain tubes
- Extra-large bimini top w/ 1 1/4" anodized aluminum frame
- Plush soft-step teakweave flooring with black accents

## PREFERRED EQUIPMENT PACKAGE

These features are typically optional on most comparable models, but come standard for you to enjoy on the ENTERTAINER SPORT PRO WITH PRESTIGE PACKAGE.

	VALUE:
✓ IN-DASH SMART 80 MEDALLION 7" CONFIGURABLE TOUCHSCREEN	\$3,499
✓ HYDRAULIC ASSIST STEERING	\$2,999
✓ PLUSH SOFT-STEP TEAKWEAVE FLOORING W/ BLACK ACCENTS	\$2,999
✓ BLACK TRIM PACKAGE: RAILS, BIMINI FRAME, TRIM, ACCENTS	\$2,199
✓ STAINLESS STEEL SKI TOW BAR	\$1,999
✓ INTERIOR BLUE ICE LED MOOD LIGHTING PACKAGE	\$1,999
✓ ADMIRAL'S HIGH BACK RECLINER	\$1,699
✓ PERFORMANCE ENHANCING LIFTING STRAKES	\$1,499
✓ LED BLUETOOTH/AM/FM/SIRIUSXM STEREO W/ USB/AUX + 4 SPEAKERS	\$1,499
✓ OVERSIZED STAINLESS STEEL BOARDING LADDER	\$1,399
✓ CUSTOM DOCKING LIGHT MODULE W/ NAVIGATION LIGHTS	\$1,399
✓ GARMIN ECHOMAP 7" GPS W/ CANADA LAKEVÜ G3 MAPPING	\$1,299
✓ BLUE UNDER-DECK LED PERIMETER LIGHTING	\$999
✓ ULTRAFINE SOFT-TOUCH FURNITURE W/ SUSPENSION SYSTEM	\$999
✓ REMOVABLE TINTED WINDSCREEN	\$699
✓ INTEGRATED FLIP-UP CHANGING ROOM	\$599
✓ TILT STEERING	\$599
✓ DUAL BATTERY SELECTOR	\$499
✓ DRIVER'S SEAT SLIDER	\$259
✓ 12 VOLT POWER OUTLET	\$139

Total Value: \$29,280. **For a Limited Time...You Pay: \$0.**



### Sport Pro Prestige Package

Three 27" tubes with performance enhancing inner and outer lifting strakes • Center tube with integrated transom • Underfloor aluminum performance shield • Hydraulic assist steering • Stainless steel ski/wakeboard bar

Scan the QR code with your mobile phone camera  
**TO SEE IT UP CLOSE**  
or visit our website: [legendboats.com](http://legendboats.com)





# V-SERIES AQUA TOWER

Sport Pro with Prestige Package and Mercury 115 EXLPT 4-Stroke

**ALL-IN  
PRICE**  
NO EXTRA FEES\*

**\$234\***

Per Week

\$112,999\*



## CHOOSE YOUR POWER

Upgrade from a 115 EXLPT 4-Stroke



Per Week

**Most  
Popular**

115 EXLPT Pro XS CT	+\$1,099	<b>+\$2</b>
150 XL 4-Stroke	+\$5,599	<b>+\$12</b>
<b>200XL 4-Stroke 4.8" 1.85</b>	+\$13,649	<b>+\$28</b>



## SPECIFICATIONS

Overall Length	26'6"	Beam	102"
Maximum Horsepower	250	Fuel Capacity	219 L
Deck Length	25'3"	Pontoon Length	24'0"
Pontoon Diameter	27"	Maximum Persons	14
Maximum Capacity	2825 lbs	Weight	3300 lbs

## TAKE A CLOSER LOOK

These details are what make the **Legend Difference**



Waterslide with built-in water pump lets you soar above the water.



Upper deck lets you take in a completely fresh view of the lake.



Enormous lounging sofas seat up to 6 people in the bow alone, with elbow room to spare.



Oversized dinette comfortably seats 4, with enough cup holders for everyone.



Work on your tan on the rear deck.



Hidden pop-up change room is great following an afternoon of water sliding.

### WE'VE GOT YOU COVERED



**Legend ProTech**  
Canvas Warranty



**.090 Gauge**  
Pontoon Tubes



**Lifetime**  
Tube, Deck and Transom Warranty



**10YR**  
10-Year  
WOWranty

## STANDARD FEATURES - ALWAYS INCLUDED

### ADDITIONAL FEATURES

- Interior blue ice mood lighting
- Large table w/ integrated drink holders and storage
- Navigational and bimini-mounted anchor lights
- 4 deck-mounted mooring cleats
- Integrated changeroom
- Built-in fuel tank - 219 L
- 2 Moveable Cup Holders with Stainless Cup Holders

### SAFETY

- Gates w/ posi-lock latches
- Navigational lights
- Bimini-mounted anchor lights
- Docking lights

### DECKS AND STORAGE

- Ez-clean rear fun zone for watersports and entertaining
- Large upper deck and slide

### SEATING

- Comfy L-shaped couch
- 2 front rounded couches for comfy lounging
- Admiral high back recliner and slider

### CONSOLE

- Chrome-bezeled gauges on a charcoal-black dashboard
- Ez reset circuit breakers
- Illuminated gauges
- Molded fiberglass console base w/ integrated storage

### CONSTRUCTION

- Performance enhancing all-aluminum v-transom
- Ez-access rear gate
- 1 1/4" raised aluminum fence rails w/ 3/8" risers
- Full-length protective extruded keels on tubes
- Extra-wide 8'6" beam
- Pressurized triple-section tube design w/ ez-drain plug
- Large 27" diameter .090 gauge pontoon tubes
- 4 deck-mounted lift and mooring cleats
- Through-bolted floor fasteners and double-sealed seams
- 3 gates w/ posi-lock latches
- Anti-vibration foam-backed quiet fencing
- Plush soft-step teakweave flooring with black accents
- Tough 6 hpp shark-nosed cones w/ spray-deflecting fins

## PREFERRED EQUIPMENT PACKAGE

These features are typically optional on most comparable models, but come standard for you to enjoy on the AQUA TOWER SPORT PRO WITH PRESTIGE PACKAGE.

	VALUE:
✓ IN-DASH SMART 80 MEDALLION 7" CONFIGURABLE TOUCHSCREEN	\$3,499
✓ HYDRAULIC ASSIST STEERING	\$2,999
✓ PLUSH SOFT-STEP TEAKWEAVE FLOORING W/ BLACK ACCENTS	\$2,999
✓ BLACK TRIM PACKAGE: RAILS, BIMINI FRAME, TRIM, ACCENTS	\$2,199
✓ STAINLESS STEEL SKI TOW BAR	\$1,999
✓ INTERIOR BLUE ICE LED MOOD LIGHTING PACKAGE	\$1,999
✓ ADMIRAL'S HIGH BACK RECLINER	\$1,699
✓ PERFORMANCE ENHANCING LIFTING STRAKES	\$1,499
✓ LED BLUETOOTH/AM/FM/SIRIUSXM STEREO W/ USB/AUX + 4 SPEAKERS	\$1,499
✓ OVERSIZED STAINLESS STEEL BOARDING LADDER	\$1,399
✓ CUSTOM DOCKING LIGHT MODULE W/ NAVIGATION LIGHTS	\$1,399
✓ GARMIN ECHOMAP 7" GPS W/ CANADA LAKEVÜ G3 MAPPING	\$1,299
✓ BLUE UNDER-DECK LED PERIMETER LIGHTING	\$999
✓ ULTRAFINE SOFT-TOUCH FURNITURE W/ SUSPENSION SYSTEM	\$999
✓ REMOVABLE TINTED WINDSCREEN	\$699
✓ INTEGRATED FLIP-UP CHANGING ROOM	\$599
✓ TILT STEERING	\$599
✓ DUAL BATTERY SELECTOR	\$499
✓ DRIVER'S SEAT SLIDER	\$259
✓ 12 VOLT POWER OUTLET	\$139

Total Value: \$29,280. **For a Limited Time...You Pay: \$0.**



### Sport Pro Prestige Package

Three 27" tubes with performance enhancing inner and outer lifting strakes • Center tube with integrated transom • Underfloor aluminum performance shield • Hydraulic assist steering • Stainless steel ski/wakeboard bar

Scan the QR code with your mobile phone camera  
**TO SEE IT UP CLOSE**  
or visit our website: [legendboats.com](http://legendboats.com)





## Pontoon Boat Accessories





# A cost-effective way to add shade to the front of your pontoon boat.



## Sunblockr Shade System.

Our lightweight breathable canvas wicks moisture, dries quickly and provides an effective UV block of 98% with its outer UV coating. Enjoy your favourite spot on the lake while providing shade to your friends and family on those hot sunny days with the all new Sunblockr shade system.

**\$699**  
(plus installation)

### Includes:

- ✓ Canvas
- ✓ 2 Floor mounting Brackets
- ✓ Two fully adjustable 7/8 Inch anodized aluminum poles
- ✓ 2 adjustable Bimini Straps
- ✓ 2 adjustable Pole Straps with integrated grommets
- ✓ Carry/Storage Branded Bag

**Note:** Sunblockr Shade System is for use while stopped or under 5 mph. Not for use when winds exceed 20 km/h.

# Pontoon Enclosures

## Extend Your Boating Season.

Add an enclosure to any Legend pontoon and extend your boating season. Our quality enclosures will keep you warm and dry, protect you from the sun, help keep the bugs out and even let you go camping for the weekend.

### Full Enclosure<sup>+</sup> **\$5,449 to \$5,999**

Be comfortable. Be protected. Stay cleaner and drier with our custom full enclosure. You can stand tall and move around freely front to back regardless of weather conditions. A double bimini top as well as a full curtain package is included. Side screens let the breeze in and keep the bugs out.

<sup>+</sup>Available on the following models:

All Fun-Series Models (Black)

All Q-Series LE Models (Black)

All E-Series Models (Black or Navy)

All Q-Series Models (Black or Navy)

All V-Series Models (Black)



#### All Snaps are Installed Through Thick Legend ProTech Material

Our strong material provides a solid fastening point as opposed to plastic, which snaps could tear through easily.



#### Synthetic Top Construction

You'll be protected rain or shine with our all-synthetic, tear-resistant bimini top construction.



#### Strong 1 1/4" Square Tubing and All-Metal Fittings

Unlike plastic fittings, metal ones won't crack, break, or wear out.



#### Double Stitching

All main zippers are double-stitched to provide lasting quality in the areas that receive the most stress.



#### Bug Screens with Roll Down Windows

Bug screens are included to let the breeze in and keep the bugs out.



# Trailer

## Triple Tube Trailer Kit

**\$999** installation included\*

Add these bunks to your pontoon trailer when choosing a Sport Performance Package to support the center tube.

# TA0232-16



## Pontoon Mooring Cover†

**\$2,149 to \$2,899**

Designed to cover your new Legend pontoon from front-to-back, our pontoon mooring covers protect your interior from damaging elements while moored at the dock or while at rest on the trailer. Adjustable support poles prevent water from pooling on the cover. Easily installed, this cover snaps around the perimeter of the fence and is tailored to work around the bimini frames. These covers are built in one or two pieces depending on the pontoon model and configuration.

● Canvas Colour  
All E-Series Models (Black & Navy)

● Canvas Colour  
All Fun-Series Models (Black)  
All Q-Series LE Models (Black & Navy)  
All Q-Series Models (Black & Navy)  
All V-Series Models (Black)



## Motor Support

**\$159**

Protect your pontoon's transom and motor from trailering stress.

# 55-1921

## Spare Tire Carrier **\$199**

# TA0028-00



**PROTECH**  
WIND, RAIN AND SUN PROTECTION.

†Not to be used for winter storage or during trailering

\* Installation, freight and taxes extra on all prices. Prices and specifications are subject to change or error. Ask your local Legend dealer for complete details.



## Spare Tire and Rim

Peace of mind on the highway.

ST185/80R13C

**\$499**

# 4300426

ST185/80R13C Galvanized

**\$549**


# 4300422



# Fun & Safety

## Premium Legend Life Jackets \$119

Premium Legend Neoprene life jackets come in grey/black in men's sizing and blue/black in women's sizing and include a lot of great features!

Colours: Women  Men  # NEOPFD



## Quick Dip Kit \$99

The essentials for a quick swim on those hot summer days.

### Package includes:

- 1 Waterproof Legend Bag
- 2 Legend Towels
- 2 Legend Water Bottles

# QUICK DIP KIT



## Pontoon Oversized Fender Kit \$229

### Package includes:

- 2 Oversized Legend Boats Fenders (8.5"x27")
- 2 6' Double Braided fender lines
- 1 x Legend Key Float
- 2 x Fender Adjuster

# PONTOON OVERSIZED FENDER KIT



## Deluxe Safety Kit \$349

Everything required by Transport Canada for boating on most lakes.

Total Value \$409 # DELUXE SAFETY KIT

### BUY THE PACKAGE AND SAVE \$60

#### Package includes:

- 4 Universal Legend Life Jackets
- 50 ft Buoyant Heaving Line
- Fire Extinguisher
- 2 Mooring Lines
- Safety Whistle
- Waterproof Flashlight
- 10 lb Anchor with 50 ft Rope
- Telescopic Paddle
- Bailing Bucket

See the Transport Canada Safe Boating Guide for your safety requirements.

# ABC123

# ABC123

## Custom Boat Numbers \$129

Colour-matched to suit any Legend model, these durable vinyl number and letter packages are easy to install and allow a variety of number and letter combinations. Our numbers meet Transport Canada's regulations for vessel license number display.

Talk to your dealer for more information.



## Pontoon Starter Kit \$499

In all the excitement of buying a new boat, you may have forgotten some essential accessories. We've packaged together everything you need to begin the boating lifestyle safely and comfortably.

Total Value \$607 # STARTER KIT - BOATS

### BUY THE PACKAGE AND SAVE \$108

#### Package includes:

- Deluxe Safety Kit
- Oversized Fender Kit
- Custom Boat Numbers

Package of 6 nylon fender cleats \$109 installed



## Flare Kit \$119

Our economical option to be compliant with Transport Canada requirements. Contains 6 hand held red flares packaged in a sealed plastic bag. Average burn time: 3 minutes each, 18 minutes total. Brightness: 700 candelas. 6 TYPE-C Signals.

# 891-594

# ABC123

# ABC123



### Legend Portable Marine Grill Kit by Kuuma

Add this Stainless Steel BBQ to any pontoon boat. Cook onboard or take it ashore.

#### Features:

- Up to 9,000 BTU's
- Total cooking area 165 sq. in.
- Stainless steel tube burner
- All 304 stainless steel construction
- Fold away legs and locking lid
- Locking removable drip tray
- Push button ignition
- Removable post mount and hardware
- Propane cylinder not included

**\$759 plus installation\*** (Approx. 1 hour)

#### Includes:

Carry bag for portability plus removable post mount and hardware.

# BBQPOSTKIT



### Minn Kota DeckHand 40 Electric Anchor Winch Kit

With quick-release bracket, davit, DeckHand 40 remote switch and 20 lbs river anchor.

Automatically raise and lower your anchor at the touch of a button. DeckHand 40 has a 40-lb anchor capacity. Pre-spoled with 100 feet of 800-lb test nylon rope. Universal davit can be mounted at base of DeckHand or in remote position on boat deck. Davit also stows anchor horizontally to eliminate anchor swing. Anchor shackle allows for quick changes between anchors. A special anti-drag system senses the bottom to allow for controlled drifting.

**\$919 plus installation\***  
(Approx. 3 hrs)

# DECKHAND 40 KIT



### ROKK Wireless - Active **\$255 plus installation\*** (Approx. 1 hr)

Securely holds and wirelessly charges your phone even in the toughest conditions. The high-grip, self-aligning jaws ensure your phone is held tightly and in the optimum charging position every time. Compatible with wireless charging enabled phones of all sizes from all major brands including Samsung, Apple and many more.

# SC-CW-04F



### Pump-Out Toilet Kit with 2.5 gallon tank

**\$315 plus installation\*** (Approx. 3 hrs)

#### Includes:

- Mounting Brackets
- 1.5" MSD Fittings
- Built-in deodorant compartment
- Holding tank level indicator

# 51-9108554392

\*Must be installed with pump-out through-fence fittings. Only available on certain models, see dealer for details.



### FINANCE YOUR INVESTMENT

Get the absolute best rates on your available credit with Legend Financing. From incredibly low rates to approvals on subprime loans, we can get you into the boat of your dreams.

**ASK YOUR DEALER HOW MUCH YOU COULD QUALIFY FOR WITH LEGEND FINANCING.**

### PROTECT YOUR INVESTMENT

Get the best peace of mind that money can buy with Legend Insurance. We'll protect your boat from bow to stern, all of your accessories, add-ons, the trailer.. the whole package. Stop worrying and get back to boating.

**ASK YOUR DEALER ABOUT PURCHASING YOUR OWN LEGEND PROTECTION PLAN.**

### CARE FOR YOUR INVESTMENT

A Legend hull comes with a lifetime warranty. That's a long time to live with your boat. That's why we've invested in creating a line of boat care products designed to keep your boat healthy and shiny.

**ASK YOUR DEALER TO KEEP YOU STOCKED WITH LEGEND CARE PRODUCTS FOR YOUR BOAT.**





 = Headquarters Whitefish, Ontario

## Freight Charges by Zone.

Zone	ON, QC	MB, NB, PE, NS	SK	AB	BC	NL
16' to 22' Pontoons	No Fee	\$1,350	\$1,600	\$2,250	\$2,600	\$4,200
23' to 26' Pontoons	No Fee	\$1,700	\$2,050	\$2,800	\$3,250	\$5,250
V-Series AquaTower	No Fee	\$3,400	\$4,150	\$5,600	\$6,550	\$10,500



\*We only print one version of our catalogue for all of Canada. Customers outside of Ontario and Quebec will have a small fee for freight. Visit us at [legendboats.com](http://legendboats.com) for your local, ALL-IN, No-Fee Price including current promotions and current premium package pricing.

## No Fee Setup and Orientation

All of the components of your pontoon boat and motor package have been specially chosen for compatibility. The professionals at your authorized Legend Dealership will help you to select the proper motor and options for your package. They will then prepare your package to ensure proper and worry-free operation. All this, at no additional charge to you, thanks to our All-In Pricing.

The setup includes the following items: control box, shift cables, cranking battery, aluminum propeller, outboard installation and set-up. Your dealer will prepare your package and give you a full orientation to ensure trouble-free boating from day one.

\* Freight charges outside of Zone 1 (Ontario and Quebec), licenses, and taxes are extra on all prices. Delivery is available at an additional cost. Payments are calculated with licenses, bank registration charges, and taxes as your downpayment at 6.99% over 1,040 weeks for amounts \$23,000 and higher, 6.99% over 780 weeks for amounts between \$10,000 and \$22,999, and 7.99% over 364 weeks for amounts less than \$10,000 (at time of printing). All financing is OAC. Payments will vary by province. All Choose your power prices are in addition and only available with the purchase of the specific package they are listed with; they are not stand alone motor prices. Towing weights are approximate and are calculated based on a full tank of fuel and 200 pounds for batteries and gear. Speed tests were done with 2 persons, 50 pounds of gear and proper weight distribution. Actual performance may vary. Prices, rates and specifications are subject to change or error. Pictures may show options. Ask for complete details. All illustrations, photographs and specifications in this catalogue are based on the latest product information. See actual boat for complete accuracy. Legend reserves the right to make changes at any time, without notice, in prices, colours, materials, equipment, specifications and models, and to discontinue models or equipment. For information on accessories, contact your local Legend dealer.

Please refer to your provincial laws regarding trailer brakes and ensure that your boat package and tow vehicle comply with the regulations in the provinces you intend to travel in. Brakes may be required in certain circumstances and can be purchased as an option or your trailer model can be upgraded before delivery if brakes are not available on certain trailers. It is your sole responsibility to ensure you comply with all provincial brake requirements for vehicles and also that you always operate your tow vehicle safely. Legend Boats accepts no responsibility with regards to provincial compliance.

At [legendboats.com](http://legendboats.com), you'll find a fully-priced electronic version of our catalogue as well as additional pictures and special offers. Always distribute passengers and cargo evenly, wear a PFD and follow the rules for safe boating. Visit: [www.tc.gc.ca/boatingsafety](http://www.tc.gc.ca/boatingsafety)



# Choose Your Power.

Ask your Legend dealer to help you select the Mercury outboard that best suits your needs from the motor choices below. Use the chart that corresponds with the standard engine packaged with your boat model. Simply add the amount to the standard package price to have the motor that is perfect for you.

## FROM A 25 ELPT 4-STROKE TO

- 30 ELPT 4-Stroke..... **\$2,199**
- 40 ELPT 4-Stroke ..... **\$4,299**
- 40 ELPT CT 4-Stroke ..... **\$4,899**
- 50 ELPT 4-Stroke..... **\$5,799**
- 50 ELPT CT 4-Stroke ..... **\$6,399**
- 60 ELPT 4-Stroke..... **\$7,299**
- 60 ELPT CT 4-Stroke ..... **\$7,899**
- 90 ELPT 4-Stroke..... **\$10,399**
- 90 ELPT CT 4-Stroke ..... **\$10,399**

## FROM A 40 ELPT CT 4-STROKE TO

- 50 ELPT 4-Stroke..... **\$899**
- 50 ELPT CT 4-Stroke ..... **\$1,499**
- 60 ELPT 4-Stroke..... **\$2,399**
- 60 ELPT CT 4-Stroke ..... **\$2,999**
- 90 ELPT 4-Stroke..... **\$5,499**
- 90 ELPT CT 4-Stroke ..... **\$6,099**
- 115 ELPT 4-Stroke ..... **\$8,299**
- 115 ELPT ProXS CT 4-Stroke..... **\$9,399**
- 150L 4-Stroke..... **\$13,899**

E = Electric Start

L = Long Shaft

XL = Extra Long Shaft

PT = Power Trim and Tilt

CT = Command Thrust

## FROM A 90 ELPT 4-STROKE TO

- 90 ELPT CT 4-Stroke ..... **\$599**
- 115 ELPT 4-Stroke ..... **\$2,799**
- 115 ELPT ProXS CT 4-Stroke..... **\$3,899**
- 150L 4-Stroke..... **\$8,399**
- 150L Pro XS with stainless steel propeller ... **\$11,849**
- 175L Pro XS 4.8" 1.85 ..... **\$15,149**
- 200L FourStroke 4.8" 1.85 ..... **\$16,449**
- 200L Pro XS 4.8" 1.85 ..... **\$18,249**
- 200L FourStroke DTS 4.8" 1.85 ..... **\$21,349**
- 225L FourStroke 4.8" 1.85..... **\$23,049**
- 250L FourStroke 5.44" 1.75 ..... **\$24,749**
- 225L FourStroke DTS 4.8" 1.85 ..... **\$27,949**
- 250L FourStroke DTS 5.44" 1.75 ..... **\$29,749**

## FROM A 115 EXLPT 4-STROKE TO

- 115EXLPT Pro XS CT ..... **\$1,099**
- 150XL 4-Stroke ..... **\$5,599**
- 150XL Pro XS..... **\$9,049**
- 175XL Pro XS 4.8" 1.85 ..... **\$12,349**
- 200XL 4-Stroke 4.8" 1.85..... **\$13,649**
- 200XL Pro XS 4.8" 1.85 ..... **\$15,449**
- 225XL 4-Stroke 4.8" 1.85..... **\$20,249**
- 250XL 4- 5.44" 1.75 ..... **\$21,949**
- 250XL Pro XS 5.44" 1.75..... **\$22,349**
- 300XL 4-Stroke 5.44" 1.75 ..... **\$24,149**
- 300XL Verado 5.44" 1.85 ..... **\$34,749**
- 350XL Verado 5.44" 1.75 HD 1, 3..... **\$47,549**



# 6-10 YEAR WOWRANTY

**A warranty that makes you say wow!**

Sure we've always had the industry's best warranties on the structural parts of our boats, like the welds, main riveted seams, pontoon tubes, decks and transoms, but what about everything else in your boat? Well, most companies offer a 1 year warranty on the other stuff and some offer up to three years. Although this is very respectable, we figured we'd double that. Legend's 6 Year WOWranty covers most other components for 6 long years, plus our Q-Series LE's, Q-Series and V-Series pontoon boats offer a 10 year warranty. That gives you a lot of worry-free, quality, memory-makin' time.

\*For more details, visit  
**[www.legendboats.com/wowranty](http://www.legendboats.com/wowranty)**



## **3-year Mercury Warranty**

Every Mercury 4-Stroke outboard is backed by a 3-year standard limited warranty to give you peace of mind. Ask us about Mercury Product Protection to extend your Mercury Factory Warranty for up to 8 years.\*



## **Lifetime Floor and Deck Warranty**

A thicker floor means a stronger boat. With 7 layers of marine-grade plywood, each individually treated, we can offer a lifetime warranty against rotting.



## **Legend Glide-On Trailer Warranty 5+1 Year**

Every Legend Glide-On trailer by Shoreland'r is backed by a 5 year frame warranty and 1-year complete tongue to tail light warranty.\*



## **Legend ProTech 5+1 Year Canvas Warranty**

Legend ProTech All-Synthetic Tear and Mildew-Resistant Material is backed by a 5 Year Warranty and guaranteed not to rot or fade for five years. Stitching, zippers, seams and other top components are covered for 1 year.



## **Lifetime Tube, Deck, and Transom Warranty**

Legend pontoon boats are backed by a lifetime warranty on the pontoon tubes, deck, and transom so you will be assured of hassle-free boating for years to come. Plus our exciting 6 Year WOWranty now extends coverage on all your key components.\*





# Our Story

In 1968, two young friends, Vic Duhamel and Carl Dewar decided to start a business. Over the years, they sold products ranging from tires to RVs before realizing how much they loved helping people onto the water and into the boating lifestyle. There were two big issues that they found. Buying a boat was much too difficult, and there really wasn't a boat designed for the Canadian environment.

In 1986, with the goal of simplifying the ownership experience and offering a boat designed by Canadians and built for Canadians, Legend Boats was born. Vic and Carl started by creating affordable and complete boat, motor and trailer packages. They beefed up their boats with thicker aluminum and made full stand-up tops standard on every full windshield model. They wanted to make sure every Legend boat could handle the rugged Canadian climate while keeping boaters safe and comfortable.

Seven children and fifteen grandchildren later, Legend is proud to have the same owners and same focus on family values as it did over nearly four decades ago when Vic and Carl decided to dedicate their lives to making it easier and more affordable to get on the water. We can't wait to welcome you to the Legend Family so that you can start creating your memories!





**FAMILY AND FISHING BOATS**

**DECK BOATS**

**PONTON BOATS**

EXPLORE ALL LEGEND PRODUCTS AT **[LEGENDBOATS.COM](https://www.legendboats.com)**

**Legend Boats Headquarters** | 4795 Regional Rd 55, Whitefish ON, POM 3E0 | Email: [info@legendboats.com](mailto:info@legendboats.com)